

TEIL 1 :

NIEDERSCHLÄGE

Erläuterungen

Die nachfolgenden Tabellen geben Auskunft über die Niederschlagsdaten aller derzeit bestehenden Niederschlagsmessstationen im Kanton Uri.

Der Tabellenkopf enthält nebst dem Stationsnamen und dem zugehörigen Stationsindikatoren die Angaben über das Flussgebiet, die Lage der Station im Landeskoordinatensystem sowie die Stationshöhe in Metern über Meer.

Die Tabelle der täglichen Niederschlagshöhen gibt die Tagessummen in Millimetern (bzw. Litern pro Quadratmeter) für die Zeit zwischen 07:00 Uhr bis 07:00 Uhr des Folgetages an. Am Fuss der Tabelle sind für jeden Monat die gesamte Niederschlagssumme, die grösste tägliche Niederschlagsmenge mit dem betreffenden Kalendertag sowie die Anzahl der Tage mit mehr als einem Millimeter Niederschlag angegeben. Der jeweils höchsten Monatssumme und der höchsten Tagesmenge des Jahres wurde ein + vorangestellt.

Für das gesamte Jahr folgen dann die Anzahl der Tage, an denen die Niederschlagshöhe die Schwellenwerte 0.1 mm, 0.3 mm, 5 mm, 10 mm, 20 mm, 50 mm und 100 mm erreicht oder überschritten hat sowie die Jahressumme und die Gesamtzahl der Niederschlagstage mit einem Millimeter und mehr.

Die Abbildungen geben für das betreffende Jahr die täglichen Niederschlagshöhen (Skalierung links) und eine Summenkurve in Millimetern (Skalierung rechts) sowie die monatlichen Niederschlagssummen (Skalierung links) und die Jahressummen (Skalierung rechts) der 12 letzten Jahre an.

Zwischen den beiden Grafiken sind die Jahressummen und das Jahresmaximum inklusive Datum angegeben. Zum Vergleich sind die durchschnittliche Jahressumme der letzten 12 Jahre und der Normalwert aufgeführt. Dieser entspricht, wenn nichts anderes angegeben ist, der mittleren jährlichen Niederschlagsmenge der Jahre 1961 bis 1990. Für die Stationen Bristen und Unterschächen, die 1982 ihren Betrieb aufgenommen haben, wurden die Normalwerte für die Periode 1961 bis 1990 synthetisch ermittelt. D.h. für die fehlenden Jahre wurden Niederschlagsdaten verschiedener umliegender Stationen herangezogen. Das gleiche gilt für die Station Göschenen.

Die Lage der Stationen ist aus der Karte 1 im Teil 5 des Jahrbuchs ersichtlich. Von einer graphischen Darstellung des Niederschlags mittels Isolinien wurde abgesehen, da in einer Hochgebirgslandschaft, wie sie das Kantonsgebiet darstellt, die Niederschlagsverteilung äusserst ungleichmässig ist.

Übersicht

Niederschlags-Messstationen der MeteoSchweiz (früher SMA)

SMA-Nr.	MESSSTATION	KOORDINATEN	STATIONS-HÖHE (m ü. M.)	ART*	MESS-PERIODE	SEITE
4020	Gütsch	690140/167590	2288	A	1955-2011	9
4040	Andermatt	688500/165340	1442	B	<1900-2011	10
4060	Göschener Alp	681240/166800	1745	C	1955-2011	11
4080	Göschenen	687730/169030	1111	C	1985-2011	12
4118	Bristen	696700/180300	828	C	1982-2011	13
4133	Unterschächen	702090/192140	1510	C	1982-2011	14
4140	Altdorf	691000/191750	451	A	<1900-2011	15
4170	Isenthal	685460/196110	778	C	1900-2011	16

* A: automatische Wetterstation
B: konventionelle Klimastation
C: Regenmessstation

Niederschlag: Tagessummen

Flussgebiet: Reuss

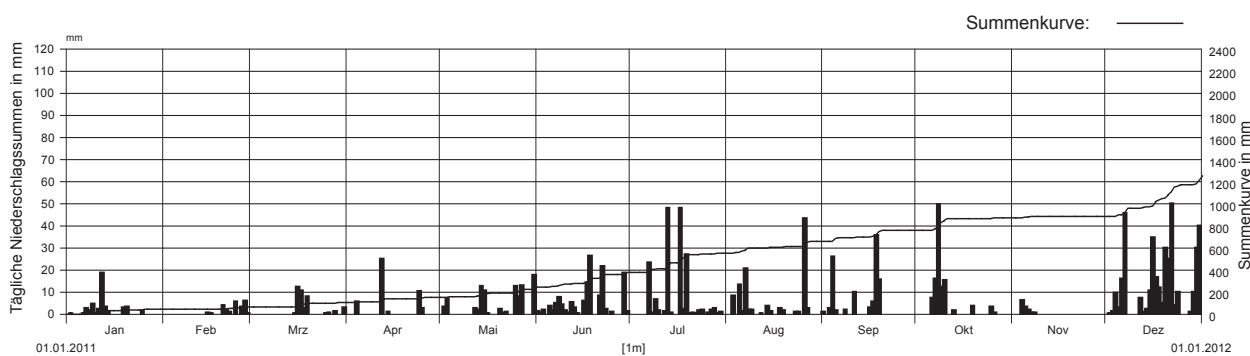
Messstelle: Gütsch

Messstellen-Nr.: 4020

Koordinaten: 690 140 / 167 590

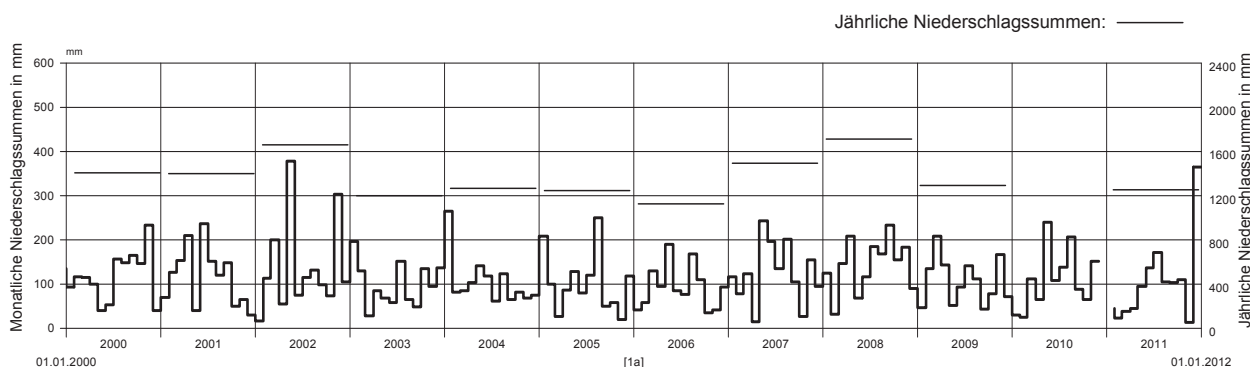
Stationshöhe: 2288 m ü.M.

2011		Januar	Februar	März	April	Mai	Juni	Juli	August	September	Oktober	November	Dezember			
Tages- summen Niederschlag in mm	1	0.0 -	0.0 -	0.0 -	0.0 -	0.1	1.2	0.0 -	0.0 -	1.0	0.0 -	0.0 -	0.0 -	1		
	2	0.3	0.0 -	0.0 -	0.0 -	3.4	0.5	0.0 -	0.0 -	0.0 -	0.0 -	0.0 -	0.3	2		
	3	0.0 -	0.0 -	0.0 -	0.0 -	7.0	2.1	0.0 -	8.2	2.7	0.0 -	0.0 -	1.3	3		
	4	0.0 -	0.0 -	0.0 -	5.8	0.0 -	0.1	0.0 -	0.0 -	26.0	0.0 -	6.3 +	9.8	4		
	5	0.0 -	0.0 -	0.0 -	0.0 -	0.0 -	3.6	0.0 -	13.3	1.8	0.0 -	3.2	3.1	5		
	6	0.4	0.0 -	0.0 -	0.0 -	0.0 -	0.0 -	1.6	0.0 -	1.5	0.0 -	7.2	2.0	15.9	6	
	7	2.6	0.0 -	0.0 -	0.0 -	0.0 -	4.9	23.3	20.7	0.0 -	16.0	0.8	45.7	7		
	8	1.8	0.0 -	0.0 -	0.0 -	0.0 -	7.8	0.6	1.9	1.9	49.7 +	0.5	0.0 -	8		
	9	4.6	0.0 -	0.0 -	0.0 -	0.0 -	4.4	6.5	1.9	0.0 -	12.4	0.0 -	0.0 -	9		
	10	0.4	0.0 -	0.0 -	0.0 -	0.0 -	1.6	1.6	0.0 -	0.0 -	15.3	0.0 -	0.0 -	10		
	11	2.3	0.0 -	0.0 -	0.0 -	0.0 -	0.8	0.0 -	0.0 -	10.0	0.0 -	0.0 -	0.0 -	11		
	12	18.8 +	0.0 -	0.0 -	25.0 +	2.7	5.3	1.4	0.2	0.0 -	0.0 -	0.0 -	7.4	12		
	13	3.4	0.0 -	0.0 -	0.0 -	2.0	3.0	48.1 +	0.0 -	0.0 -	1.7	0.0 -	1.1	13		
	14	1.5	0.0 -	0.0 -	1.0	12.7	0.4	0.6	3.8	0.0 -	0.0 -	0.0 -	2.2	14		
	15	0.0 -	0.7	0.3	0.0 -	10.8	0.0 -	0.0 -	1.4	0.0 -	0.0 -	0.0 -	10.6	15		
	16	0.0 -	0.3	12.3 +	0.0 -	0.2	5.9	0.0 -	0.0 -	3.1	0.0 -	0.0 -	34.5	16		
	17	0.0 -	0.0 -	10.8	0.0 -	0.0 -	14.3	48.0	0.0 -	5.6	0.0 -	0.0 -	16.5	17		
	18	0.0 -	0.0 -	2.5	0.0 -	0.0 -	26.4 +	2.4	2.7	35.7 +	0.0 -	0.0 -	12.0	18		
	19	3.1	0.0 -	8.1	0.0 -	0.0 -	0.0 -	27.0	1.6	15.7	3.8	0.0 -	5.0	19		
	20	3.4	4.1	0.0 -	0.0 -	2.3	0.0 -	0.4	0.0 -	0.0 -	0.1	0.0 -	30.0	20		
	21	0.0 -	1.9	0.0 -	0.0 -	0.5	8.4	0.6	0.0 -	0.0 -	0.0 -	0.0 -	25.0	21		
	22	0.0 -	1.0	0.0 -	0.0 -	1.1	21.6	0.2	0.0 -	0.0 -	0.0 -	0.0 -	50.0 +	22		
	23	0.0 -	0.0 -	0.0 -	0.0 -	0.0 -	2.3	1.7	0.9	0.0 -	0.0 -	0.0 -	4.0	23		
	24	0.0 -	5.6	0.0 -	10.2	0.0 -	0.0 -	2.0	1.1	0.0 -	0.0 -	0.0 -	10.0	24		
	25	1.6	0.1	0.3	2.6	12.8	0.9	0.0 -	0.0 -	0.0 -	3.2	0.0 -	0.0 -	25		
	+ Maximum - Minimum	26	0.0 -	3.4	0.5	0.0 -	7.9	0.0 -	0.8	43.4 +	0.0 -	0.8	0.0 -	0.0 -	26	
		27	0.0 -	6.1 +	0.0 -	0.0 -	13.0	0.0 -	2.1	2.6	0.0 -	0.0 -	0.0 -	0.0 -	27	
		28	0.0 -	0.2	1.3	0.1	0.0 -	0.0 -	2.8	0.0 -	0.0 -	0.0 -	1.0	28		
		29	0.0 -	0.0 -	0.0 -	0.0 -	0.0 -	18.5	0.4	0.1	0.0 -	0.0 -	0.0 -	10.0	29	
		30	0.0 -	0.0 -	0.0 -	0.0 -	0.0 -	1.2	1.0	0.0 -	0.0 -	0.0 -	0.0 -	30.0	30	
		31	0.0 -	0.0 -	2.9	0.0 -	17.8 +	0.1	0.1	0.0 -	0.0 -	0.0 -	0.0 -	40.0	31	
Monatssumme		44.2	23.4	39.0	44.7	94.3	136.8	171.6	105.3	103.5	110.2	12.8 -	365.4+			
Maximum		18.8	6.1 -	12.3	25.0	17.8	26.4	48.1	43.4	35.7	49.7	6.3	50.0 +	mm		
Datum (Tag)		12.	27.	16.	12.	31.	18.	13.	26.	18.	8.	4.	22.			
Niederschlagstage		10	6	6	5	12	18	13	13	10	8	3	22	d		
Niederschlagstage grösser / gleich als:		161 ≥0.1		150 ≥0.3		60 ≥5.0		42 ≥10.0		19 ≥20.0		1 ≥50.0		0 ≥100.0		mm
Jahreswerte:		Gesamtniederschlag (1a): 1251.2 mm						Niederschlagstage (≥1.0 mm): 126								



2000-2011	2000	2001	2002	2003	2004	2005	2006	2007	2008	2009	2010	2011	
Jahressumme	1406.4	1402.7	1662.3	1198.8	1269.4	1249.0	1124.7-	1491.4	1713.6+	1295.6	--	1251.2	
Jahresmaximum	88.1	65.8	79.4	56.5	86.3	81.4	45.7 -	60.7	91.5	91.8 +	61.9	50.0	mm
Datum (Tag.Monat)	20.9.	15.7.	27.5.	27.11.	5.5.	21.1.	22.5.	10.11.	21.11.	30.11.	2.5.	22.12.	

Durchschnittliche Jahressumme 2000-2011 (nur vollständige Jahre): 1370 mm Normwert 1961-1990: 1479 mm



Niederschlag: Tagessummen

Flussgebiet: Reuss

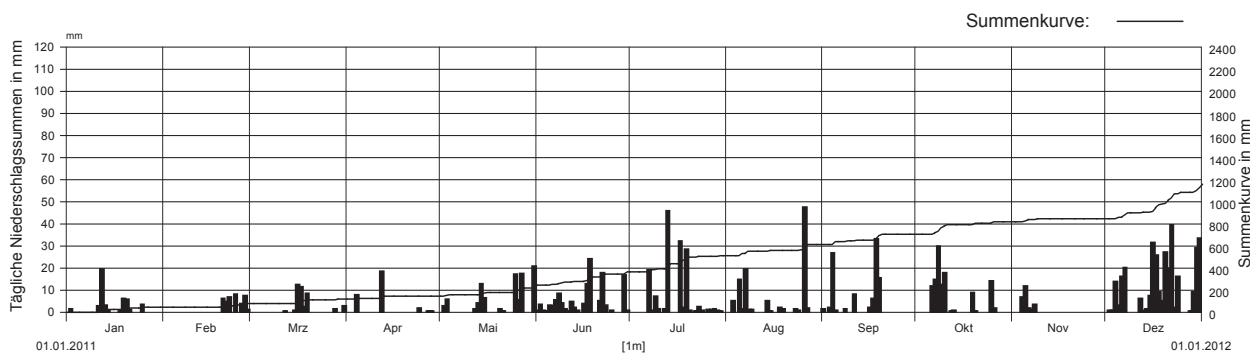
Messstelle: Andermatt

Messstellen-Nr.: 4040

Koordinaten: 688 500 / 165 340

Stationshöhe: 1442 m ü.M.

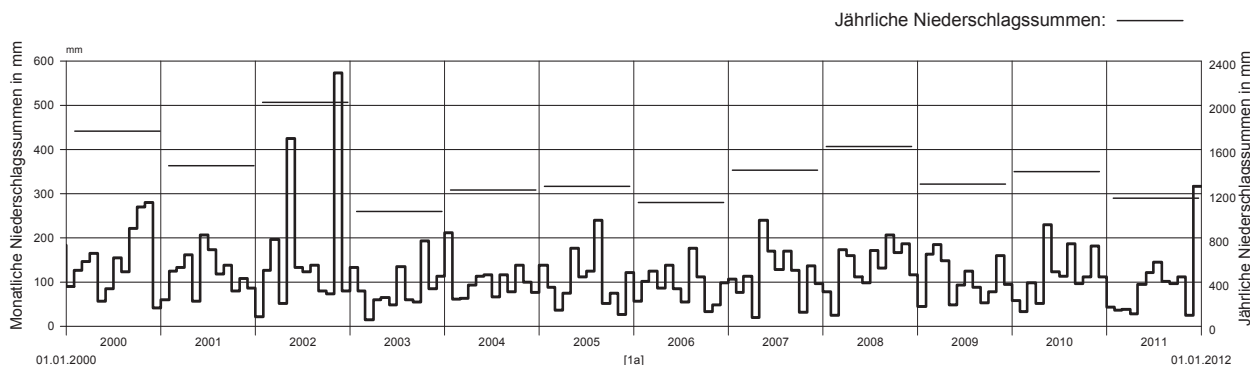
2011		Januar	Februar	März	April	Mai	Juni	Juli	August	September	Oktober	November	Dezember			
Tages- summen Niederschlag in mm	1	0.0 -	0.0 -	0.0 -	0.0 -	0.0 -	0.7	0.0 -	0.0 -	1.3	0.0 -	0.0 -	0.0 -	1		
	2	1.5	0.0 -	0.0 -	0.0 -	0.0 -	2.8	3.3	0.0 -	0.0 -	0.0 -	0.0 -	0.7	2		
	3	0.0 -	0.0 -	0.0 -	0.0 -	5.8	0.8	0.0 -	5.0	1.9	0.0 -	0.0 -	0.6	3		
	4	0.0 -	0.0 -	0.0 -	7.7	0.0 -	0.2	0.0 -	0.0 -	26.6	0.0 -	6.5	13.7	4		
	5	0.0 -	0.0 -	0.0 -	0.0 -	0.0 -	0.0 -	3.1	0.0 -	14.5	0.7	0.0 -	11.8 +	3.1	5	
	6	0.0 -	0.0 -	0.0 -	0.0 -	0.0 -	0.0 -	2.8	0.1	1.4	0.0 -	11.7	1.7	16.0	6	
	7	0.0 -	0.0 -	0.0 -	0.0 -	0.0 -	0.0 -	5.2	19.1	19.3	0.0 -	14.8	0.9	19.9	7	
	8	0.0 -	0.0 -	0.0 -	0.0 -	0.0 -	0.0 -	8.4	0.7	0.9	1.2	29.7 +	3.5	0.0 -	8	
	9	0.1	0.0 -	0.0 -	0.0 -	0.0 -	0.0 -	4.0	6.9	1.1	0.0 -	12.3	0.0 -	0.0 -	9	
	10	0.0 -	0.0 -	0.0 -	0.0 -	0.0 -	0.0 -	1.2	1.2	0.0 -	0.0 -	17.8	0.0 -	0.0 -	10	
	11	2.8	0.0 -	0.0 -	0.0 -	0.0 -	0.0 -	0.2	0.0 -	0.0 -	8.0	0.0 -	0.0 -	0.0 -	11	
	12	19.4 +	0.0 -	0.2	18.2 +	1.4	4.7	1.3	0.1	0.0 -	0.2	0.0 -	5.9	12		
	13	3.0	0.0 -	0.1	0.0 -	3.9	1.9	45.8 +	0.0 -	0.0 -	0.7	0.0 -	0.5	13		
	14	0.7	0.0 -	0.0 -	0.0 -	12.6	0.6	0.1	4.9	0.0 -	0.0 -	0.0 -	1.3	14		
	15	0.0 -	0.0 -	0.8	0.0 -	6.2	0.1	0.0 -	0.2	0.0 -	0.0 -	0.0 -	7.3	15		
	16	0.0 -	0.0 -	12.2 +	0.0 -	0.0 -	3.8	0.0 -	0.0 -	2.1	0.0 -	0.0 -	31.5	16		
	17	0.0 -	0.0 -	11.2	0.0 -	0.0 -	12.7	32.1	0.0 -	6.1	0.0 -	0.0 -	25.7	17		
	18	0.3	0.0 -	2.3	0.0 -	0.0 -	24.1 +	2.1	2.0	33.0 +	0.0 -	0.0 -	9.0	18		
	19	6.0	0.0 -	8.2	0.0 -	0.0 -	0.0 -	28.3	1.3	15.3	8.5	0.0 -	5.1	19		
	20	5.7	6.1	0.0 -	0.0 -	1.5	0.0 -	0.5	0.0 -	0.0 -	0.2	0.0 -	27.0	20		
	21	0.9	4.8	0.0 -	0.0 -	0.4	5.1	0.1	0.0 -	0.0 -	0.0 -	0.0 -	19.7	21		
	22	0.0 -	6.5	0.0 -	0.0 -	0.0 -	17.6	0.3	0.0 -	0.0 -	0.0 -	0.0 -	39.5 +	22		
	23	0.0 -	0.0 -	0.0 -	0.0 -	0.0 -	2.9	2.2	1.5	0.0 -	0.0 -	0.0 -	1.9	23		
	24	0.0 -	8.1 +	0.0 -	1.6	0.0 -	0.0 -	0.8	0.7	0.0 -	0.1	0.0 -	15.9	24		
	25	3.3	0.0 -	0.0 -	0.1	17.1	0.7	0.0 -	0.1	0.0 -	14.0	0.0 -	0.0 -	25		
	26	0.0 -	3.6	0.0 -	0.0 -	5.5	0.0 -	0.9	47.5 +	0.0 -	1.6	0.0 -	0.0 -	26		
	27	0.0 -	7.3	0.0 -	0.3	17.4	0.0 -	0.9	1.8	0.0 -	0.0 -	0.0 -	0.0 -	27		
	28	0.0 -	1.0	1.3	0.2	0.0 -	0.0 -	1.2	0.0 -	0.0 -	0.0 -	0.0 -	0.4	28		
	29	0.0 -	0.0 -	0.0 -	0.1	0.0 -	16.6	0.7	0.0 -	0.0 -	0.0 -	0.0 -	9.1	29		
	30	0.0 -	0.0 -	0.0 -	0.0 -	0.0 -	0.7	0.3	0.0 -	0.0 -	0.0 -	0.0 -	29.1	30		
	31	0.0 -	0.0 -	2.6	20.7 +								33.2	31		
Monatssumme		43.7	37.4	38.9	28.2	95.3	121.4	145.6	102.3	96.2	111.6	24.4 -	316.1+			
Maximum		19.4	8.1 -	12.2	18.2	20.7	24.1	45.8	47.5 +	33.0	29.7	11.8	39.5	mm		
Datum (Tag)		12.	24.	16.	12.	31.	18.	13.	26.	18.	8.	5.	22.			
Niederschlagstage		7	7	6	3	11	16	10	11	9	8	4	19	d		
Niederschlagstage grösser / gleich als:		157 ≥0.1		139 ≥0.3		65 ≥5.0		40 ≥10.0		15 ≥20.0		0 ≥50.0		0 ≥100.0		mm
Jahreswerte:		Gesamtniederschlag (1a): 1161.1 mm						Niederschlagstage (≥1.0 mm): 111								



2000-2011	2000	2001	2002	2003	2004	2005	2006	2007	2008	2009	2010	2011	
Jahressumme	1763.6	1450.0	2024.1+	1043.1-	1235.3	1265.0	1118.2	1414.9	1625.8	1283.7	1397.7	1161.1	
Jahresmaximum	95.3	78.8	125.1 +	92.6	73.2	45.3 -	45.9	55.0	71.3	80.0	58.7	47.5	mm
Datum (Tag.Monat)	20.9.	15.7.	3.5.	31.10.	26.10.	2.8.	8.12.	14.5.	29.10.	17.7.	15.11.	26.8.	

Durchschnittliche Jahressumme 2000-2011 (nur vollständige Jahre): 1399 mm

Normwert 1961-1990: 1422 mm



Niederschlag: Tagessummen

Flussgebiet: Reuss

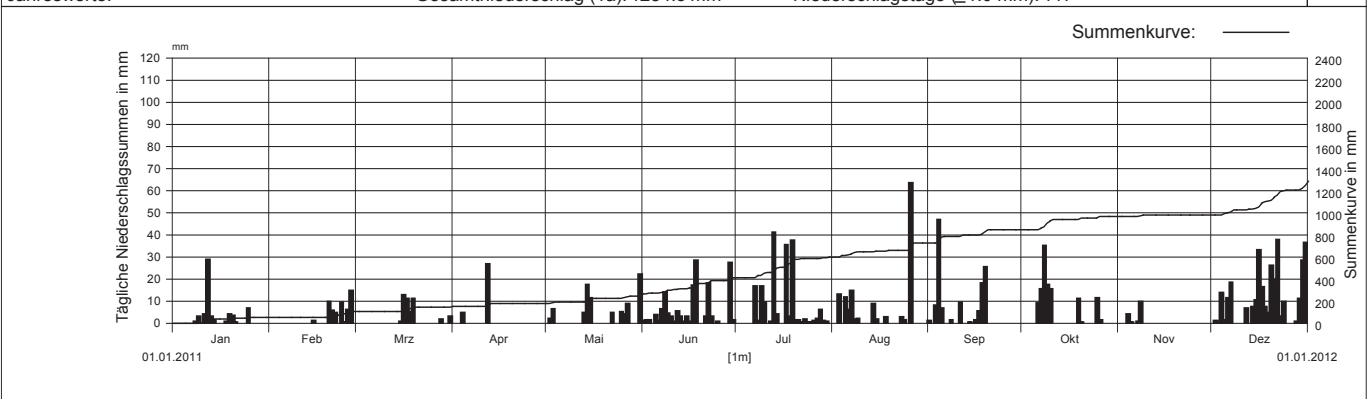
Messstelle: Göschener Alp

Messstellen-Nr.: 4060

Koordinaten: 681 240 / 166 800

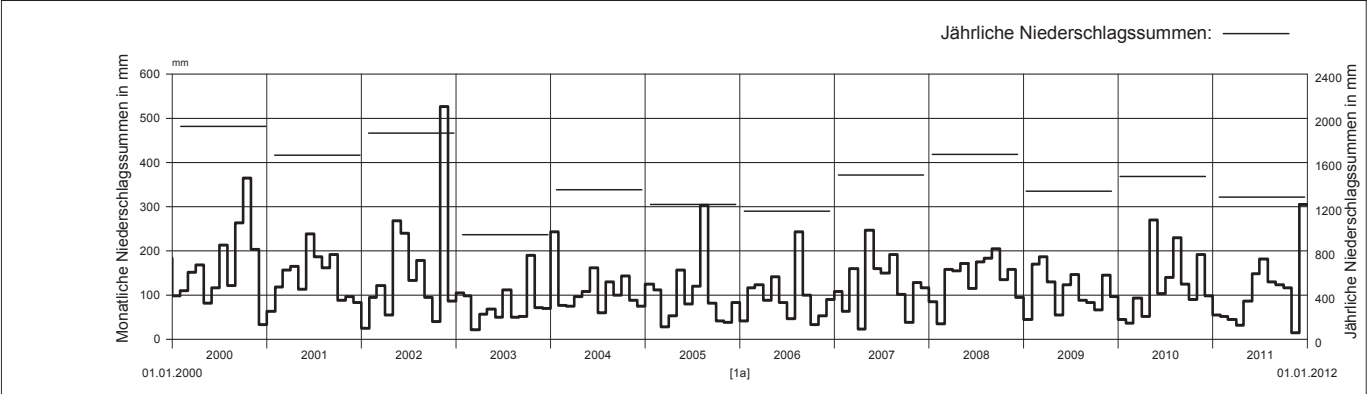
Stationshöhe: 1745 m ü.M.

2011		Januar	Februar	März	April	Mai	Juni	Juli	August	September	Oktober	November	Dezember			
Tages- summen Niederschlag in mm	1	0.0 -	0.0 -	0.0 -	0.0 -	0.0 -	1.1	0.0 -	0.0 -	1.0	0.0 -	0.0 -	0.0 -	1		
	2	0.0 -	0.0 -	0.0 -	0.0 -	2.0	1.5	0.0 -	0.0 -	0.0 -	0.0 -	0.0 -	1.0	2		
	3	0.0 -	0.0 -	0.0 -	0.0 -	6.4	1.4	0.0 -	13.1	8.0	0.0 -	0.0 -	0.8	3		
	4	0.0 -	0.0 -	0.0 -	4.6	0.0 -	0.1	0.0 -	0.0 -	46.5 +	0.0 -	4.0	13.6	4		
	5	0.0 -	0.0 -	0.0 -	0.0 -	0.0 -	3.7	0.0 -	11.7	6.5	0.0 -	0.4	1.5	5		
	6	0.0 -	0.0 -	0.0 -	0.0 -	0.0 -	1.0	0.0 -	6.0	0.0 -	9.0	0.0 -	11.5	6		
	7	0.0 -	0.0 -	0.0 -	0.0 -	0.0 -	6.4	16.5	14.7	0.0 -	15.3	0.8	18.2	7		
	8	0.7	0.0 -	0.0 -	0.0 -	0.0 -	14.0	1.0	1.8	1.4	35.1 +	9.6 +	0.0 -	8		
	9	2.9	0.0 -	0.0 -	0.0 -	0.0 -	4.4	16.7	2.0	0.0 -	17.4	0.0 -	0.0 -	9		
	10	0.0 -	0.0 -	0.0 -	0.0 -	0.0 -	2.9	9.5	0.0 -	0.0 -	15.2	0.0 -	0.0 -	10		
	11	3.9	0.0 -	0.0 -	0.0 -	0.0 -	0.5	0.0 -	0.0 -	9.3	0.0 -	0.0 -	0.0 -	11		
	12	28.6 +	0.0 -	0.0 -	26.5 +	0.0 -	5.5	0.5	0.1	0.0 -	0.0 -	0.0 -	6.6	12		
	13	3.0	0.0 -	0.0 -	0.0 -	4.6	3.0	41.1 +	0.0 -	0.0 -	0.1	0.0 -	0.0 -	13		
	14	1.2	0.0 -	0.0 -	0.0 -	17.5	0.5	3.9	8.5	0.2	0.0 -	0.0 -	7.5	14		
	15	0.0 -	0.9	0.6	0.0 -	11.2	3.0	0.0 -	1.6	0.0 -	0.0 -	0.0 -	10.3	15		
	16	0.0 -	0.0 -	12.5 +	0.0 -	0.0 -	0.5	0.0 -	0.0 -	1.3	0.0 -	0.0 -	32.9	16		
	17	0.0 -	0.0 -	11.0	0.0 -	0.0 -	17.1	35.4	0.0 -	5.3	0.0 -	0.0 -	16.2	17		
	18	0.5	0.0 -	5.0	0.0 -	0.0 -	28.2 +	3.0	2.7	17.9	0.0 -	0.0 -	7.4	18		
	19	4.0	0.0 -	11.0	0.0 -	0.0 -	0.0 -	37.5	0.0 -	25.5	11.0	0.0 -	4.6	19		
	20	3.3	9.8	0.0 -	0.0 -	0.0 -	0.0 -	1.4	0.0 -	0.0 -	0.3	0.0 -	25.9	20		
	21	0.4	5.8	0.0 -	0.0 -	0.0 -	3.0	1.4	0.0 -	0.0 -	0.0 -	0.0 -	19.6	21		
	22	0.0 -	4.6	0.0 -	0.0 -	4.7	18.0	0.4	0.0 -	0.0 -	0.0 -	0.0 -	37.8 +	22		
	23	0.0 -	0.0 -	0.0 -	0.0 -	0.0 -	3.0	1.6	2.6	0.0 -	0.0 -	0.0 -	3.1	23		
	24	0.0 -	9.3	0.0 -	0.0 -	0.0 -	0.0 -	0.4	1.4	0.0 -	0.1	0.0 -	9.8	24		
	25	6.5	0.4	0.0 -	0.0 -	5.0	0.5	0.2	0.0 -	0.0 -	11.2	0.0 -	0.0 -	25		
	26	0.0 -	6.0	0.0 -	0.0 -	4.0	0.0 -	0.9	63.5 +	0.0 -	1.2	0.0 -	0.0 -	26		
	27	0.0 -	14.5 +	0.0 -	0.0 -	8.6	0.0 -	2.1	0.0 -	0.0 -	0.0 -	0.0 -	0.0 -	27		
	28	0.0 -	0.0 -	1.7	0.1	0.0 -	0.0 -	6.0	0.0 -	0.0 -	0.0 -	0.0 -	0.7	28		
	29	0.0 -	0.0 -	0.0 -	0.0 -	0.0 -	27.2	0.9	0.0 -	0.0 -	0.0 -	0.0 -	10.9	29		
	30	0.0 -	0.0 -	0.0 -	0.0 -	0.0 -	1.3	0.6	0.0 -	0.0 -	0.0 -	0.0 -	28.2	30		
	31	0.0 -	2.9	0.0 -	0.0 -	21.9 +	0.0 -	0.0 -	0.0 -	0.0 -	0.0 -	0.0 -	36.2	31		
+ Maximum																
- Minimum																
Monatssumme		55.0	51.3	44.7	31.2	85.9	147.8	181.0	129.7	122.9	115.9	14.8 -	304.3+			
Maximum		28.6	14.5	12.5	26.5	21.9	28.2	41.1	63.5 +	46.5	35.1	9.6 -	37.8	mm		
Datum (Tag)		12.	27.	16.	12.	31.	18.	13.	26.	4.	8.	8.	22.			
Niederschlagstage		8	6	6	2	10	19	14	12	10	8	2	20	d		
Niederschlagstage grösser / gleich als:		145 ≥0.1		138 ≥0.3		69 ≥5.0		44 ≥10.0		17 ≥20.0		1 ≥50.0		0 ≥100.0		mm
Jahreswerte:		Gesamtniederschlag (1a): 1284.5 mm						Niederschlagstage (≥1.0 mm): 117								



2000-2011	2000	2001	2002	2003	2004	2005	2006	2007	2008	2009	2010	2011	
Jahressumme	1925.2+	1665.6	1865.7	948.5 -	1356.4	1220.0	1160.8	1487.9	1672.9	1338.2	1473.3	1284.5	
Jahresmaximum	105.4	65.0	110.5 +	65.0	80.6	59.5	45.7 -	58.0	57.5	71.0	55.4	63.5	mm
Datum (Tag.Monat)	13.10.	15.7.	16.11.	31.10.	26.10.	1.8.	19.2.	1.3.	6.9.	17.7.	14.8.	26.8.	

Durchschnittliche Jahressumme 2000-2011 (nur vollständige Jahre): 1450 mm Normwert 1961-1990: 1555 mm



Niederschlag: Tagessummen

Flussgebiet: Reuss

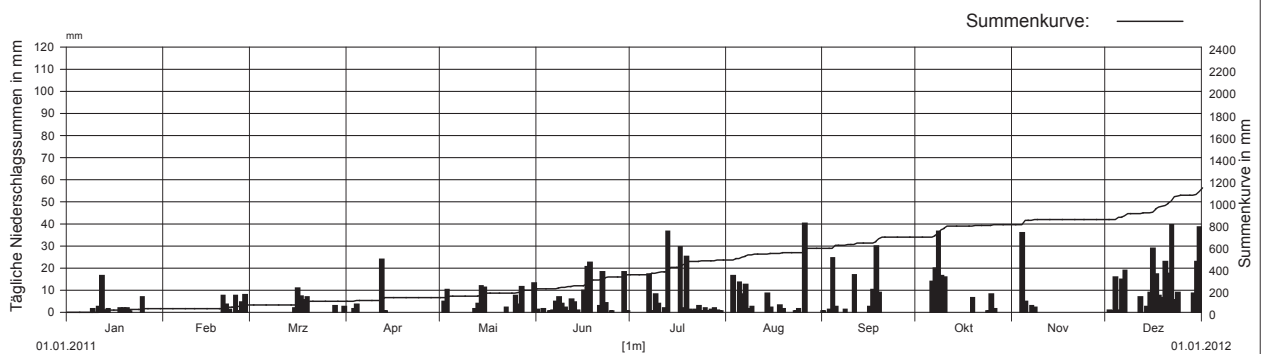
Messstelle: Göschenen

Messstellen-Nr.: 4080

Koordinaten: 687 730 / 169 030

Stationshöhe: 1111 m ü.M.

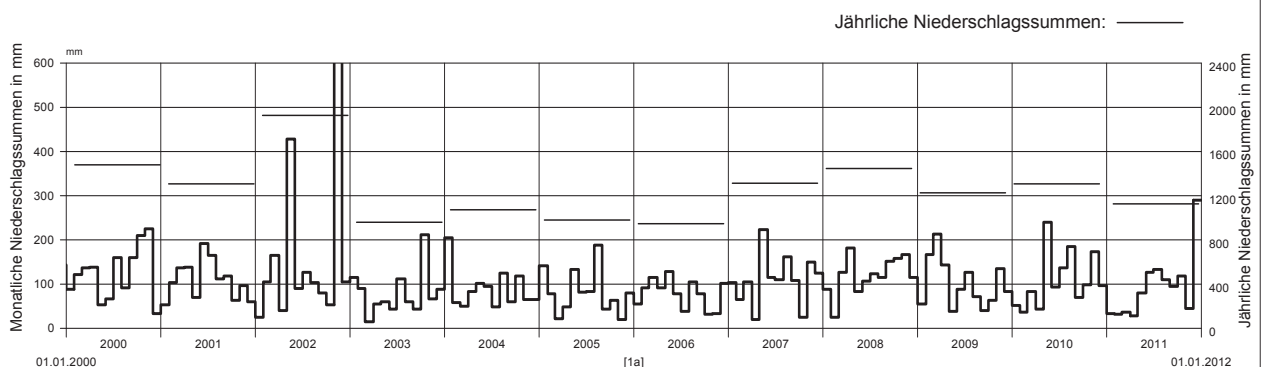
2011		Januar	Februar	März	April	Mai	Juni	Juli	August	September	Oktober	November	Dezember			
Tages- summen Niederschlag in mm	1	0.0 -	0.0 -	0.0 -	0.0 -	0.0 -	1.1	0.0 -	0.0 -	0.3	0.0 -	0.0 -	0.0 -	1		
	2	0.0 -	0.0 -	0.0 -	0.0 -	4.6	0.0 -	0.0 -	0.0 -	0.0 -	0.0 -	0.0 -	0.7	2		
	3	0.0 -	0.0 -	0.0 -	1.5	10.1	1.4	0.0 -	16.4	0.9	0.0 -	0.0 -	0.3	3		
	4	0.0 -	0.0 -	0.0 -	3.3	0.0 -	0.0 -	0.0 -	0.0 -	24.3	0.0 -	35.6 +	15.6	4		
	5	0.0 -	0.0 -	0.0 -	0.0 -	0.0 -	0.0 -	0.4	0.0 -	13.3	2.2	0.0 -	4.7	5		
	6	0.0 -	0.0 -	0.0 -	0.0 -	0.0 -	0.0 -	0.6	0.0 -	8.1	0.0 -	13.6	0.0 -	14.6	6	
	7	0.0 -	0.0 -	0.0 -	0.0 -	0.0 -	0.0 -	4.6	17.0	12.2	0.0 -	19.8	2.7	18.6	7	
	8	0.0 -	0.0 -	0.0 -	0.0 -	0.0 -	0.0 -	6.6	0.3	1.2	1.1	36.3 +	2.0	0.0 -	8	
	9	1.2	0.0 -	0.0 -	0.0 -	0.0 -	0.0 -	3.6	8.1	2.2	0.0 -	16.3	0.0 -	0.0 -	9	
	10	0.1	0.0 -	0.0 -	0.0 -	0.0 -	0.0 -	1.9	3.8	0.0 -	0.0 -	15.6	0.0 -	0.0 -	10	
	11	2.4	0.0 -	0.0 -	0.0 -	0.1	0.0 -	0.4	0.0 -	0.0 -	16.5	0.0 -	0.0 -	0.0 -	11	
	12	16.3 +	0.0 -	0.0 -	0.0 -	23.7 +	1.5	5.6	1.6	0.0 -	0.0 -	0.0 -	0.0 -	6.5	12	
	13	0.6	0.0 -	0.0 -	0.0 -	0.4	3.7	4.4	36.2 +	0.0 -	0.0 -	0.1	0.0 -	0.0 -	13	
	14	1.4	0.0 -	0.0 -	0.0 -	0.0 -	11.7	0.7	0.0 -	8.4	0.1	0.0 -	0.0 -	2.3	14	
	15	0.0 -	0.0 -	1.8	0.0 -	11.1	0.0 -	0.0 -	0.0 -	2.0	0.0 -	0.0 -	0.0 -	8.6	15	
	16	0.0 -	0.0 -	10.7 +	0.0 -	0.0 -	9.6	0.0 -	0.0 -	2.2	0.0 -	0.0 -	0.0 -	28.5	16	
	17	0.0 -	0.0 -	7.1	0.0 -	0.0 -	20.3	29.4	0.0 -	9.9	0.0 -	0.0 -	0.0 -	17.1	17	
	18	1.6	0.0 -	5.3	0.0 -	0.0 -	22.3 +	1.6	3.1	29.8 +	0.0 -	0.0 -	0.0 -	7.3	18	
	19	1.8	0.0 -	6.6	0.0 -	0.0 -	0.0 -	0.0 -	24.9	1.3	8.5	6.4	0.0 -	6.4	19	
	20	1.6	7.4	0.0 -	0.0 -	0.0 -	0.0 -	0.0 -	1.0	0.0 -	0.0 -	0.0 -	0.0 -	22.7	20	
	21	0.4	3.3	0.0 -	0.0 -	0.0 -	2.6	0.5	0.0 -	0.0 -	0.0 -	0.0 -	0.0 -	17.3	21	
	22	0.0 -	1.0	0.0 -	0.0 -	1.9	18.0	1.0	0.0 -	0.0 -	0.0 -	0.0 -	0.0 -	39.2 +	22	
	23	0.0 -	0.0 -	0.0 -	0.0 -	0.0 -	4.1	2.5	0.3	0.0 -	0.0 -	0.0 -	0.0 -	5.3	23	
	24	0.0 -	7.2	0.0 -	0.0 -	0.0 -	0.0 -	0.3	1.4	0.0 -	0.3	0.0 -	0.0 -	8.7	24	
	25	6.7	0.2	0.0 -	0.0 -	0.0 -	7.3	0.3	1.6	0.0 -	0.0 -	8.1	0.0 -	0.0 -	25	
	26	0.0 -	4.2	0.0 -	0.0 -	3.3	0.0 -	0.3	40.1 +	0.0 -	1.3	0.0 -	0.0 -	0.0 -	26	
	27	0.0 -	7.7 +	0.0 -	0.0 -	11.4	0.0 -	1.0	0.0 -	0.0 -	0.0 -	0.0 -	0.0 -	0.0 -	27	
	28	0.0 -	0.1	2.8	0.0 -	0.0 -	0.0 -	1.8	0.0 -	0.0 -	0.0 -	0.0 -	0.0 -	0.0 -	28	
	29	0.0 -	0.0 -	0.0 -	0.0 -	0.0 -	18.0	0.8	0.0 -	0.0 -	0.0 -	0.0 -	0.0 -	8.4	29	
	30	0.0 -	0.0 -	0.0 -	0.0 -	0.0 -	0.4	0.3	0.0 -	0.0 -	0.0 -	0.0 -	0.0 -	22.5	30	
	31	0.0 -	0.0 -	2.4	0.0 -	13.1 +	0.0 -	0.0 -	0.0 -	0.0 -	0.0 -	0.0 -	0.0 -	38.2	31	
Monatssumme		34.1	31.1	36.7	29.0 -	79.7	126.9	134.0	110.0	95.8	117.8	45.0	289.4+			
Maximum		16.3	7.7 -	10.7	23.7	13.1	22.3	36.2	40.1 +	29.8	36.3	35.6	39.2	mm		
Datum (Tag)		12.	27.	16.	12.	31.	18.	13.	26.	18.	8.	4.	22.			
Niederschlagstage		8	6	7	3	11	15	14	12	8	8	4	18	d		
Niederschlagstage grösser / gleich als:		142 ≥ 0.1		136 ≥ 0.3		64 ≥ 5.0		39 ≥ 10.0		16 ≥ 20.0		0 ≥ 50.0		0 ≥ 100.0		mm
Jahreswerte:		Gesamtniederschlag (1a): 1129.5 mm						Niederschlagstage (≥ 1.0 mm): 114								



2000-2011	2000	2001	2002	2003	2004	2005	2006	2007	2008	2009	2010	2011	
Jahressumme	1483.2	1309.8	1929.1+	958.4	1072.9	982.8	949.5 -	1311.8	1443.6	1224.3	1304.6	1129.5	
Jahresmaximum	71.0	66.2	125.2 +	103.4	68.4	47.8	49.0	51.1	63.7	66.8	64.4	40.1 -	mm
Datum (Tag.Monat)	20.9.	15.7.	15.11.	31.10.	26.10.	21.1.	8.12.	8.8.	29.10.	17.7.	15.11.	26.8.	

Durchschnittliche Jahressumme 2000-2011 (nur vollständige Jahre): 1258 mm

Normwert 1961-1990: 1424 mm



Niederschlag: Tagessummen

Flussgebiet: Reuss

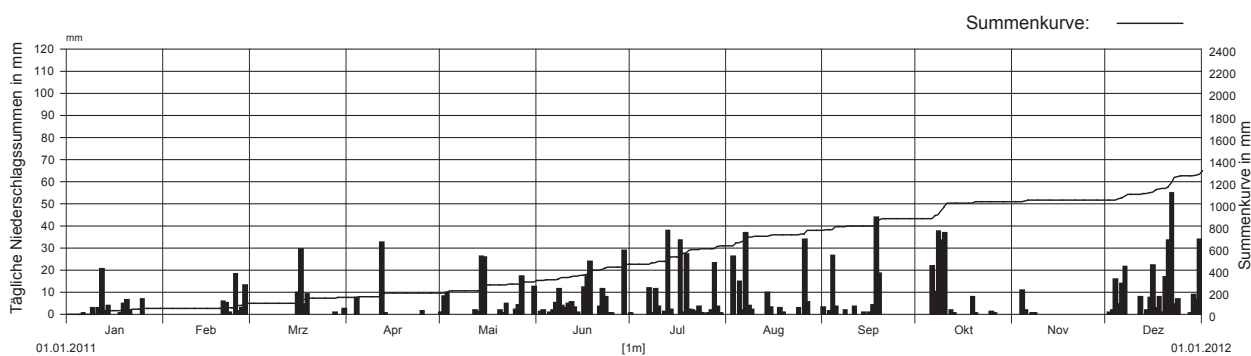
Messstelle: Bristen

Messstellen-Nr.: 4118

Koordinaten: 696 700 / 180 300

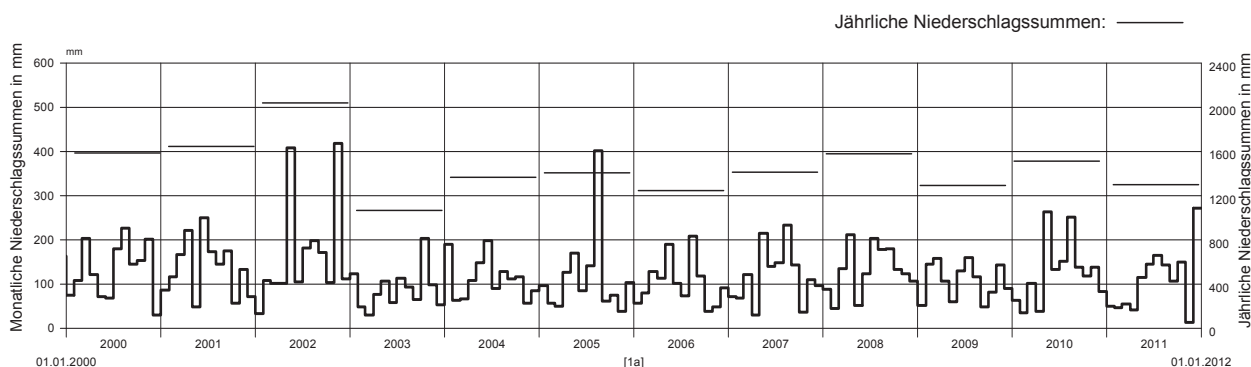
Stationshöhe: 828 m ü.M.

2011		Januar	Februar	März	April	Mai	Juni	Juli	August	September	Oktober	November	Dezember			
Tages- summen Niederschlag in mm	1	0.0 -	0.0 -	0.0 -	0.0 -	0.8	0.0 -	0.4	0.0 -	3.0	0.0 -	0.0 -	0.0 -	1		
	2	0.0 -	0.0 -	0.0 -	0.0 -	8.0	1.0	0.0 -	0.0 -	0.0 -	0.0 -	0.0 -	0.6	2		
	3	0.0 -	0.0 -	0.0 -	0.0 -	9.6	1.8	0.0 -	26.1	1.3	0.0 -	0.0 -	1.8	3		
	4	0.0 -	0.0 -	0.0 -	7.2	0.0 -	0.0 -	0.0 -	0.0 -	26.2	0.0 -	10.5 +	15.6	4		
	5	0.0 -	0.0 -	0.0 -	0.0 -	0.0 -	0.0 -	0.6	0.0 -	14.6	3.5	0.0 -	1.6	4.3	5	
	6	0.4	0.0 -	0.0 -	0.0 -	0.0 -	0.0 -	1.7	0.0 -	1.6	0.0 -	21.6	0.0 -	13.8	6	
	7	0.0 -	0.0 -	0.0 -	0.0 -	0.0 -	0.0 -	5.0	11.8	36.7 +	0.0 -	9.9	0.4	21.2	7	
	8	0.0 -	0.0 -	0.0 -	0.0 -	0.0 -	0.0 -	11.4	0.2	3.8	1.6	37.4 +	0.2	0.0 -	8	
	9	2.8	0.0 -	0.0 -	0.0 -	0.0 -	0.0 -	3.7	11.3	2.0	0.0 -	33.3	0.0 -	0.0 -	9	
	10	0.0 -	0.0 -	0.0 -	0.0 -	0.0 -	0.0 -	2.5	3.3	0.0 -	0.0 -	36.7	0.0 -	0.0 -	10	
	11	2.6	0.0 -	0.0 -	0.0 -	0.0 -	0.0 -	4.8	0.0 -	0.0 -	3.2	0.0 -	0.0 -	0.0 -	11	
	12	20.3 +	0.0 -	0.0 -	0.0 -	32.2 +	1.7	5.4	1.0	0.0 -	0.0 -	1.8	0.0 -	7.6	12	
	13	1.5	0.0 -	0.0 -	0.0 -	0.4	1.0	3.1	37.7 +	0.0 -	0.0 -	0.3	0.0 -	0.0 -	13	
	14	3.6	0.0 -	0.0 -	0.0 -	0.0 -	25.9 +	0.7	2.0	9.8	0.8	0.0 -	0.0 -	1.8	14	
	15	0.0 -	0.0 -	0.0 -	0.0 -	0.0 -	25.6	0.0 -	0.0 -	2.9	0.0 -	0.0 -	0.0 -	7.5	15	
	16	0.0 -	0.0 -	9.7	0.0 -	0.0 -	0.0 -	11.9	0.0 -	0.0 -	0.8	0.0 -	0.0 -	22.1	16	
	17	0.0 -	0.0 -	29.2 +	0.0 -	0.0 -	0.0 -	17.1	33.2	0.0 -	3.9	0.0 -	0.0 -	2.6	17	
	18	0.4	0.0 -	4.3	0.0 -	0.0 -	0.0 -	23.6	0.5	2.7	43.6 +	0.0 -	0.0 -	7.6	18	
	19	4.5	0.0 -	9.1	0.0 -	0.0 -	0.0 -	0.0 -	26.9	0.6	18.2	7.6	0.0 -	0.6	19	
	20	6.4	5.8	0.0 -	0.0 -	1.7	0.0 -	0.0 -	1.9	0.0 -	0.1	0.3	0.0 -	16.5	20	
	21	1.5	4.9	0.0 -	0.0 -	0.4	3.4	1.8	0.0 -	0.0 -	0.0 -	0.0 -	0.0 -	33.2	21	
	22	0.0 -	0.7	0.0 -	0.0 -	0.0 -	4.5	11.3	1.1	0.0 -	0.0 -	0.0 -	0.0 -	54.8 +	22	
	23	0.0 -	0.0 -	0.0 -	0.0 -	0.0 -	0.0 -	7.7	3.3	0.0 -	0.0 -	0.0 -	0.0 -	4.3	23	
	24	0.0 -	17.9 +	0.0 -	0.0 -	0.0 -	0.0 -	0.2	0.3	2.8	0.0 -	0.0 -	0.0 -	6.7	24	
	25	6.8	1.5	0.0 -	1.4	2.1	0.4	0.4	0.0 -	0.0 -	0.0 -	1.0	0.0 -	0.0 -	25	
	26	0.0 -	2.8	0.0 -	0.0 -	4.1	0.0 -	0.3	33.6	0.0 -	0.2	0.0 -	0.0 -	0.0 -	26	
	27	0.0 -	12.9	0.0 -	0.0 -	17.1	0.0 -	1.6	5.5	0.0 -	0.0 -	0.0 -	0.0 -	0.0 -	27	
	28	0.0 -	0.0 -	0.6	0.0 -	0.0 -	0.0 -	0.0 -	23.1	0.0 -	0.0 -	0.0 -	0.0 -	0.4	28	
	29	0.0 -	0.0 -	0.0 -	0.0 -	0.0 -	0.0 -	28.5 +	3.3	0.0 -	0.0 -	0.0 -	0.0 -	8.6	29	
	30	0.0 -	0.0 -	0.0 -	0.0 -	0.0 -	0.0 -	0.0 -	0.4	0.0 -	0.0 -	0.0 -	0.0 -	6.3	30	
	31	0.0 -	0.0 -	2.4	0.0 -	0.0 -	12.3	0.0 -	0.0 -	0.0 -	0.0 -	0.0 -	0.0 -	33.7	31	
Monatssumme		50.8	46.5	55.3	41.2	114.8	145.8	165.4	142.7	106.2	150.1	12.7 -	271.6+			
Maximum		20.3	17.9	29.2	32.2	25.9	28.5	37.7	36.7	43.6	37.4	10.5 -	54.8 +	mm		
Datum (Tag)		12.	24.	17.	12.	14.	29.	13.	7.	18.	8.	4.	22.			
Niederschlagstage		9	6	5	3	12	17	15	12	9	8	2	19	d		
Niederschlagstage grösser / gleich als:		146 ≥0.1		141 ≥0.3		62 ≥5.0		41 ≥10.0		25 ≥20.0		1 ≥50.0		0 ≥100.0		mm
Jahreswerte:		Gesamtniederschlag (1a): 1303.1 mm						Niederschlagstage (≥1.0 mm): 117								



2000-2011	2000	2001	2002	2003	2004	2005	2006	2007	2008	2009	2010	2011	
Jahressumme	1587.6	1645.6	2042.9+	1068.7-	1364.9	1407.6	1247.2	1415.4	1582.4	1293.3	1515.6	1303.1	
Jahresmaximum	78.1	56.1	120.4	54.0	69.0	140.3 +	42.5 -	54.0	58.7	64.5	67.4	54.8	mm
Datum (Tag.Monat)	6.8.	3.8.	3.5.	31.10.	5.5.	22.8.	16.9.	8.8.	15.8.	17.7.	5.8.	22.12.	

Durchschnittliche Jahressumme 2000-2011 (nur vollständige Jahre): 1456 mm Normwert 1961-1990: 1400 mm



Niederschlag: Tagessummen

Flussgebiet: Reuss

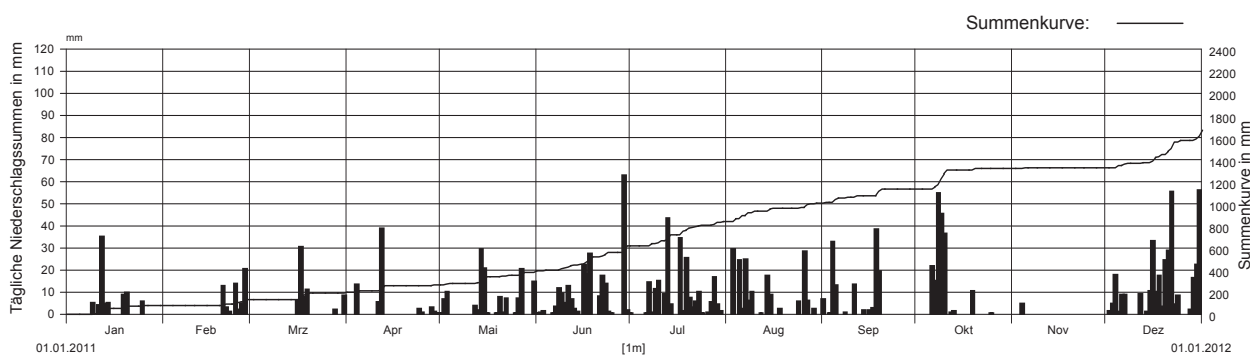
Messstelle: Unterschächen

Messstellen-Nr.: 4133

Koordinaten: 700 190 / 192 000

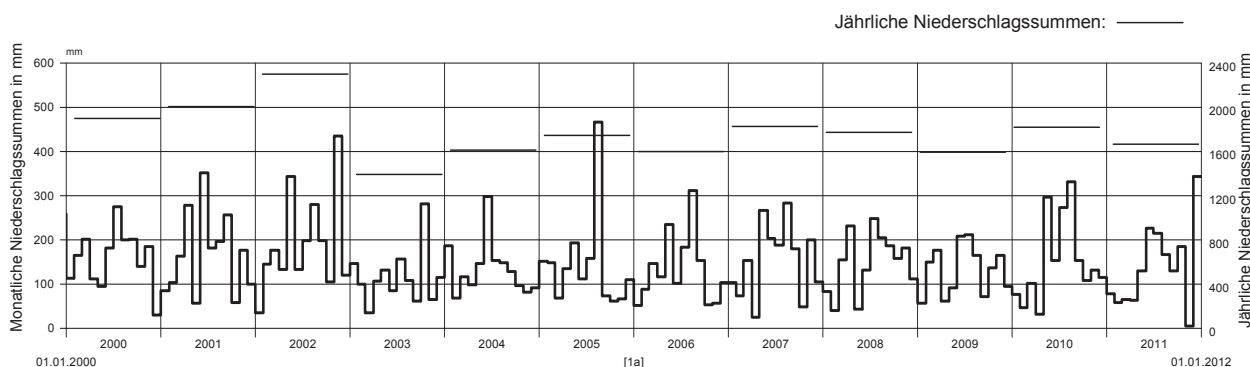
Stationshöhe: 1470 m ü.M.

2011		Januar	Februar	März	April	Mai	Juni	Juli	August	September	Oktober	November	Dezember			
Tages- summen Niederschlag in mm	1	0.0 -	0.0 -	0.0 -	0.0 -	0.2	0.3	0.2	0.0 -	6.7	0.0 -	0.0 -	0.0 -	1		
	2	0.0 -	0.0 -	0.0 -	0.0 -	6.5	0.6	0.0 -	0.0 -	0.0 -	0.0 -	0.0 -	1.2	2		
	3	0.0 -	0.0 -	0.0 -	0.0 -	9.9	1.5	0.0 -	29.2 +	0.3	0.0 -	0.0 -	4.6	3		
	4	0.0 -	0.0 -	0.0 -	13.2	0.0 -	0.0 -	0.0 -	0.0 -	32.5	0.0 -	4.8 +	17.6	4		
	5	0.0 -	0.0 -	0.0 -	0.0 -	0.0 -	0.1	0.0 -	24.2	12.9	0.0 -	0.0 -	0.9	5		
	6	0.0 -	0.0 -	0.0 -	0.0 -	0.0 -	0.3	0.2	2.3	0.0 -	21.7	0.0 -	8.6	6		
	7	0.0 -	0.0 -	0.0 -	0.0 -	0.0 -	3.5	14.4	24.5	0.0 -	14.9	0.0 -	8.8	7		
	8	0.0 -	0.0 -	0.0 -	0.0 -	0.0 -	11.8	0.7	5.9	0.7	54.6 +	0.0 -	0.0 -	8		
	9	5.0	0.0 -	0.0 -	0.0 -	0.0 -	9.4	11.5	10.0	0.0 -	45.3	0.0 -	0.0 -	9		
	10	0.0 -	0.0 -	0.0 -	0.0 -	0.0 -	5.1	15.0	0.0 -	0.0 -	36.2	0.0 -	0.1	10		
	11	4.1	0.0 -	0.0 -	5.2	0.0 -	12.8	0.0 -	0.0 -	13.2	0.0 -	0.0 -	0.0 -	11		
	12	35.0 +	0.0 -	0.0 -	38.6 +	3.7	6.6	9.1	0.4	0.0 -	0.7	0.0 -	8.9	12		
	13	4.8	0.0 -	0.0 -	0.0 -	1.8	2.3	43.2 +	0.0 -	0.0 -	1.3	0.0 -	0.0 -	13		
	14	5.0	0.0 -	0.0 -	0.0 -	29.4 +	0.9	4.4	17.3	1.6	0.0 -	0.0 -	0.9	14		
	15	0.0 -	0.0 -	0.0 -	0.0 -	20.5	0.0 -	0.0 -	8.5	0.0 -	0.0 -	0.0 -	10.4	15		
	16	0.0 -	0.0 -	5.9	0.0 -	0.2	22.3	0.0 -	0.0 -	1.7	0.0 -	0.0 -	32.9	16		
	17	0.0 -	0.0 -	30.2 +	0.0 -	0.0 -	18.1	34.2	0.0 -	2.7	0.0 -	0.0 -	9.9	17		
	18	0.0 -	0.0 -	7.8	0.0 -	0.0 -	27.2	1.3	2.3	38.3 +	0.0 -	0.0 -	17.4	18		
	19	8.8	0.0 -	11.1	0.0 -	0.4	0.0 -	25.4	0.0 -	19.2	10.3	0.0 -	3.5	19		
	20	9.6	12.8	0.0 -	0.0 -	7.8	0.0 -	7.2	0.0 -	0.0 -	0.0 -	0.0 -	24.4	20		
	21	0.0 -	3.1	0.0 -	0.0 -	0.5	8.1	3.0	0.0 -	0.0 -	0.0 -	0.0 -	28.5	21		
	22	0.0 -	1.0	0.0 -	0.0 -	7.0	17.2	5.7	0.0 -	0.0 -	0.0 -	0.0 -	55.3	22		
	23	0.0 -	0.0 -	0.0 -	0.0 -	0.0 -	13.8	10.1	0.1	0.0 -	0.0 -	0.0 -	4.4	23		
	24	0.0 -	13.8	0.0 -	2.3	0.0 -	1.0	0.3	5.7	0.0 -	0.0 -	0.0 -	8.3	24		
	25	5.6	2.0	0.0 -	0.5	0.3	0.3	0.0 -	0.0 -	0.0 -	0.4	0.0 -	0.0 -	25		
	26	0.0 -	4.7	0.0 -	0.0 -	7.0	0.0 -	0.8	28.3	0.0 -	0.0 -	0.0 -	0.0 -	26		
	27	0.0 -	20.4 +	0.0 -	0.0 -	20.4	0.0 -	5.2	6.1	0.0 -	0.0 -	0.0 -	0.0 -	27		
	28	0.0 -	0.0 -	1.9	3.1	0.0 -	0.0 -	16.8	0.0 -	0.0 -	0.0 -	0.0 -	2.1	28		
	29	0.0 -	0.0 -	0.0 -	0.9	0.0 -	62.5 +	4.2	2.3	0.0 -	0.0 -	0.0 -	16.3	29		
	30	0.0 -	0.0 -	0.0 -	0.2	0.0 -	1.8	1.3	0.0 -	0.0 -	0.0 -	0.0 -	22.4	30		
	31	0.0 -	0.0 -	8.3	0.0 -	14.5	0.0 -	0.0 -	0.0 -	0.0 -	0.0 -	0.0 -	56.0 +	31		
Monatssumme		77.9	57.8	65.2	64.0	130.1	227.5	214.2	167.1	129.8	185.4	4.8 -	343.4+			
Maximum		35.0	20.4	30.2	38.6	29.4	62.5 +	43.2	29.2	38.3	54.6	4.8 -	56.0	mm		
Datum (Tag)		12.	27.	17.	12.	14.	29.	13.	3.	18.	8.	4.	31.			
Niederschlagstage		8	7	6	5	11	17	17	13	9	7	1	20	d		
Niederschlagstage grösser / gleich als:		149 ≥0.1		141 ≥0.3		87 ≥5.0		55 ≥10.0		29 ≥20.0		4 ≥50.0		0 ≥100.0		mm
Jahreswerte:		Gesamtniederschlag (1a): 1667.2 mm						Niederschlagstage (≥1.0 mm): 121								



2000-2011	2000	2001	2002	2003	2004	2005	2006	2007	2008	2009	2010	2011	
Jahressumme	1900.5	2005.0	2302.0+	1394.1-	1615.7	1744.0	1602.5	1829.9	1776.1	1590.4	1819.0	1667.2	
Jahresmaximum	78.1	60.4	97.7	49.3 -	51.9	183.8 +	66.3	65.9	68.4	78.3	62.9	62.5	mm
Datum (Tag.Monat)	20.9.	3.8.	3.5.	8.10.	5.5.	22.8.	16.9.	8.8.	21.11.	17.7.	5.8.	29.6.	

Durchschnittliche Jahressumme 2000-2011 (nur vollständige Jahre): 1771 mm Normwert 1961-1990: 1773 mm



Niederschlag: Tagessummen

Flussgebiet: Reuss

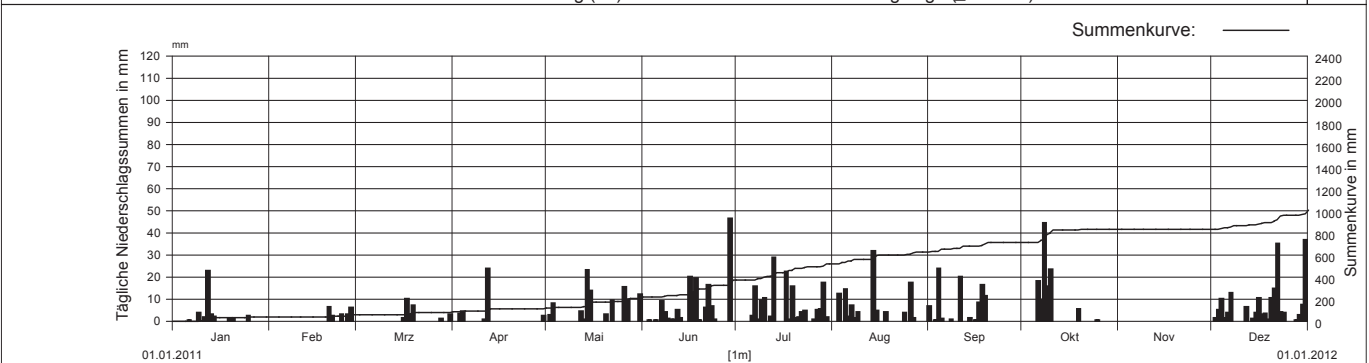
Messstelle: Altdorf

Messstellen-Nr.: 4140

Koordinaten: 690 960 / 191 700

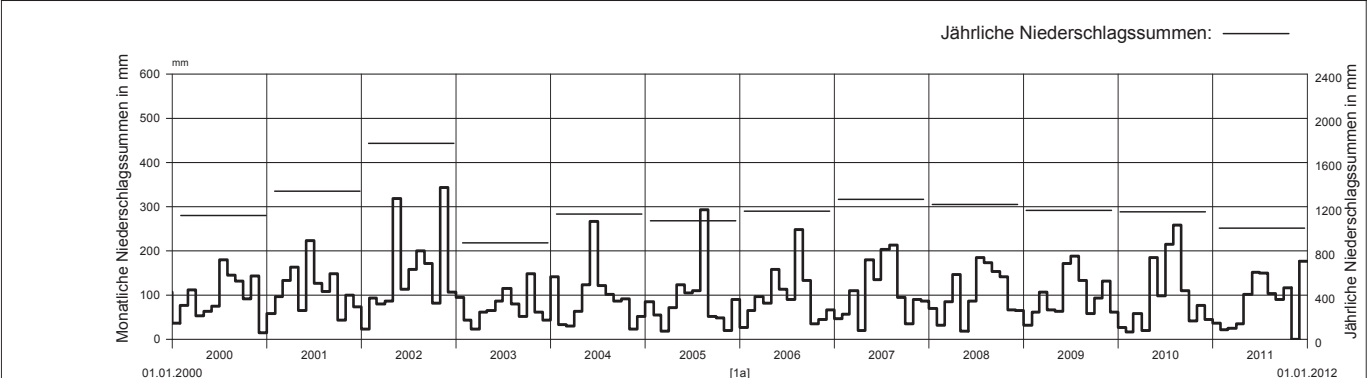
Stationshöhe: 451 m ü.M.

2011		Januar	Februar	März	April	Mai	Juni	Juli	August	September	Oktober	November	Dezember		
Tages- summen Niederschlag in mm	1	0.0 -	0.0 -	0.0 -	0.0 -	0.0 -	0.0 -	0.1	0.0 -	6.6	0.0 -	0.0 +	0.0 -	1	
	2	0.0 -	0.0 -	0.0 -	0.0 -	2.7	0.0 -	0.0 -	0.0 -	0.0 -	0.0 -	0.0 +	1.3	2	
	3	0.0 -	0.0 -	0.0 -	3.5	7.9	0.4	0.0 -	12.3	0.2	0.0 -	0.0 +	5.0	3	
	4	0.0 -	0.0 -	0.0 -	4.2	0.0 -	0.0 -	0.0 -	0.0 -	23.8 +	0.0 -	0.0 +	9.9	4	
	5	0.0 -	0.0 -	0.0 -	0.0 -	0.0 -	0.0 -	0.3	0.0 -	14.4	1.0	0.0 -	0.0 +	1.5	5
	6	0.2	0.0 -	0.0 -	0.0 -	0.0 -	0.0 -	0.1	2.3	2.1	0.0 -	18.1	0.0 +	3.8	6
	7	0.0 -	0.0 -	0.0 -	0.0 -	0.0 -	0.0 -	9.1	15.7	6.9	0.0 -	9.8	0.0 +	12.7	7
	8	0.0 -	0.0 -	0.0 -	0.0 -	0.0 -	0.0 -	4.0	0.6	1.3	0.7	44.3 +	0.0 +	0.0 -	8
	9	3.7	0.0 -	0.0 -	0.0 -	0.0 -	0.0 -	1.0	9.3	4.0	0.0 -	15.8	0.0 +	0.0 -	9
	10	0.0 -	0.0 -	0.0 -	0.0 -	0.0 -	0.0 -	0.6	10.4	0.0 -	0.0 -	23.3	0.0 +	0.0 -	10
	11	1.6	0.0 -	0.0 -	0.0 -	0.5	0.0 -	0.7	0.0 -	0.0 -	20.0	0.0 -	0.0 +	0.0 -	11
	12	22.6 +	0.0 -	0.0 -	0.0 -	23.6 +	4.3	5.0	2.1	0.0 -	0.0 -	0.0 -	0.0 +	6.2	12
	13	3.1	0.0 -	0.0 -	0.0 -	0.0 -	0.5	1.5	28.5 +	0.0 -	0.0 -	0.0 -	0.0 +	0.0 -	13
	14	2.1	0.0 -	0.0 -	0.0 -	0.0 -	23.1 +	0.0 -	0.0 -	31.7 +	1.5	0.0 -	0.0 +	1.1	14
	15	0.0 -	0.0 -	0.0 -	0.0 -	0.0 -	13.6	0.0 -	0.0 -	4.5	0.0 -	0.0 -	0.0 +	3.7	15
	16	0.0 -	0.0 -	1.5	0.0 -	0.0 -	0.0 -	19.9	0.0 -	0.0 -	0.4	0.0 -	0.0 +	10.4	16
	17	0.0 -	0.0 -	10.1 +	0.0 -	0.0 -	0.0 -	12.9	22.2	0.0 -	8.3	0.0 -	0.0 +	3.0	17
	18	0.0 -	0.0 -	2.9	0.0 -	0.0 -	0.0 -	19.4	0.8	4.0	16.2	0.0 -	0.0 +	3.5	18
	19	1.0	0.0 -	7.1	0.0 -	0.0 -	0.0 -	0.3	15.8	0.0 -	11.5	5.3	0.0 +	0.5	19
	20	0.9	6.4 +	0.0 -	0.0 -	0.0 -	3.0	0.0 -	1.4	0.0 -	0.1	0.1	0.0 +	10.2	20
	21	0.0 -	2.3	0.0 -	0.0 -	0.0 -	0.1	5.9	1.8	0.0 -	0.0 -	0.0 -	0.0 +	14.6	21
	22	0.0 -	0.0 -	0.0 -	0.0 -	0.0 -	9.5	16.2	4.0	0.0 -	0.0 -	0.0 -	0.0 +	35.1	22
	23	0.0 -	0.0 -	0.0 -	0.0 -	0.0 -	0.0 -	6.5	4.8	0.0 -	0.0 -	0.0 -	0.0 +	3.9	23
	24	0.0 -	3.1	0.0 -	0.0 -	0.0 -	0.0 -	0.8	0.0 -	3.6	0.0 -	0.0 -	0.0 +	3.8	24
	25	2.3	0.0 -	0.0 -	0.0 -	0.0 -	0.0 -	0.0 -	0.0 -	0.0 -	0.0 -	0.4	0.0 +	0.0 -	25
	26	0.0 -	3.0	0.0 -	0.0 -	0.0 -	15.2	0.0 -	0.5	17.4	0.0 -	0.0 -	0.0 +	0.0 -	26
	27	0.0 -	6.1	0.0 -	0.0 -	0.0 -	9.8	0.0 -	5.1	1.2	0.0 -	0.0 -	0.0 +	0.0 -	27
	28	0.0 -	0.0 -	1.1	0.0 -	0.0 -	0.0 -	0.0 -	5.5	0.0 -	0.0 -	0.0 -	0.0 +	0.3	28
	29	0.0 -	0.0 -	0.0 -	0.0 -	0.0 -	0.0 -	46.3 +	17.3	0.0 -	0.0 -	0.0 -	0.0 +	2.7	29
	30	0.0 -	0.0 -	0.0 -	2.4	0.0 -	0.0 -	0.1	1.8	0.0 -	0.0 -	0.0 -	0.0 +	7.4	30
	31	0.0 -	0.0 -	3.0	0.0 -	0.0 -	12.0	0.0 -	0.0 -	0.0 -	0.0 -	0.0 -	0.0 +	36.8 +	31
Monatssumme		37.5	20.9	25.7	34.2	101.7	151.0	150.0	103.4	90.3	117.1	0.0 -	177.4+		
Maximum		22.6	6.4	10.1	23.6	23.1	46.3 +	28.5	31.7	23.8	44.3	0.0 -	36.8	mm	
Datum (Tag)		12.	20.	17.	12.	14.	29.	13.	14.	4.	8.	1.	31.		
Niederschlagstage		7	5	6	4	10	12	16	12	8	6	0	20	d	
Niederschlagstage grösser / gleich als:		131 ≥ 0.1		123 ≥ 0.3		58 ≥ 5.0		36 ≥ 10.0		13 ≥ 20.0		0 ≥ 50.0		0 ≥ 100.0	
Jahreswerte:		Gesamtniederschlag (1a): 1009.2 mm						Niederschlagstage (≥ 1.0 mm): 106							



2000-2011	2000	2001	2002	2003	2004	2005	2006	2007	2008	2009	2010	2011	
Jahressumme	1123.1	1337.2	1774.4+	872.4 -	1133.8	1072.1	1158.2	1269.1	1220.5	1167.5	1152.7	1009.2	
Jahresmaximum	56.4	49.1	118.8 +	31.7 -	50.2	70.1	53.2	55.8	62.7	70.9	57.9	46.3	mm
Datum (Tag.Monat)	20.9.	15.7.	3.5.	31.10.	2.6.	22.8.	16.9.	8.8.	29.10.	17.7.	5.8.	29.6.	

Durchschnittliche Jahressumme 2000-2011 (nur vollständige Jahre): 1191 mm Normwert 1961-1990: 1099 mm



Niederschlag: Tagessummen

Flussgebiet: Reuss

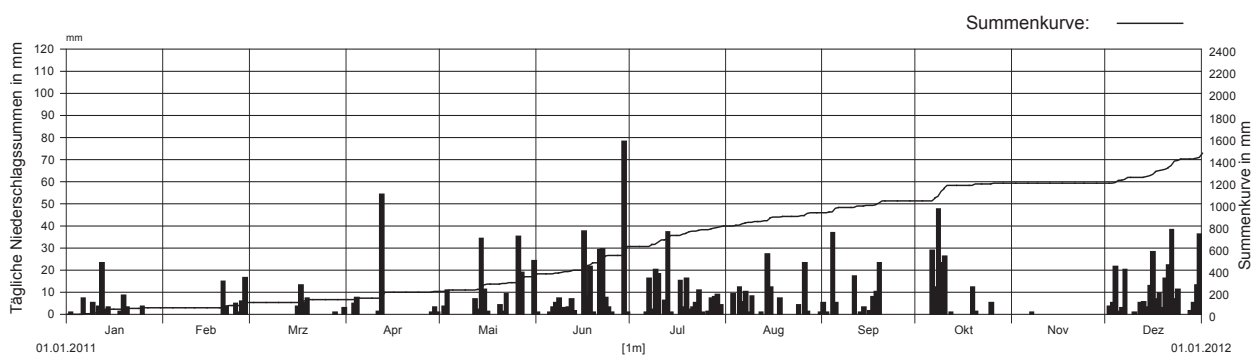
Messstelle: Isenthal

Messstellen-Nr.: 4170

Koordinaten: 685 460 / 196 110

Stationshöhe: 778 m ü.M.

2011		Januar	Februar	März	April	Mai	Juni	Juli	August	September	Oktober	November	Dezember			
Tages- summen Niederschlag in mm	1	0.0 -	0.0 -	0.0 -	0.0 -	0.0 -	0.5	0.0 -	0.0 -	5.0	0.0 -	0.0 -	0.0 -	1		
	2	0.5	0.0 -	0.0 -	0.0 -	0.0 -	3.5	0.0 -	0.0 -	0.5	0.0 -	0.0 -	0.0 -	2		
	3	0.0 -	0.0 -	0.0 -	4.5	10.5	0.0 -	0.0 -	9.0	0.0 -	0.0 -	0.0 -	5.0	3		
	4	0.0 -	0.0 -	0.0 -	7.4	0.0 -	0.0 -	0.0 -	0.0 -	36.8 +	0.0 -	0.0 -	21.5	4		
	5	0.0 -	0.0 -	0.0 -	0.0 -	0.0 -	0.5	0.0 -	12.0	5.1	0.0 -	0.0 -	1.0	5		
	6	7.0	0.0 -	0.0 -	0.0 -	0.0 -	0.0 -	3.0	0.5	5.5	0.0 -	28.5	0.0 -	2.5	6	
	7	0.0 -	0.0 -	0.0 -	0.0 -	0.0 -	0.0 -	5.0	16.0	10.0	0.0 -	12.0	0.5 +	20.0	7	
	8	0.0 -	0.0 -	0.0 -	0.0 -	0.0 -	0.0 -	7.0	2.0	0.5	0.0 -	47.5 +	0.0 -	0.0 -	8	
	9	5.0	0.0 -	0.0 -	0.0 -	0.0 -	0.0 -	2.5	20.0	8.0	0.0 -	23.0	0.0 -	0.0 -	9	
	10	0.0 -	0.0 -	0.0 -	0.0 -	0.0 -	0.0 -	2.5	18.0	0.0 -	0.0 -	26.0	0.0 -	0.5	10	
	11	3.5	0.0 -	0.0 -	0.0 -	1.0	0.0 -	3.0	0.0 -	0.0 -	17.0	0.0 -	0.0 -	0.0 -	11	
	12	23.0 +	0.0 -	0.0 -	0.0 -	54.0 +	6.5	6.5	6.0	0.5	0.0 -	0.5	0.0 -	5.0	12	
	13	2.0	0.0 -	0.0 -	0.0 -	0.0 -	2.0	1.5	37.0 +	0.0 -	0.5	0.0 -	0.0 -	5.5	13	
	14	3.0	0.0 -	0.0 -	0.0 -	0.0 -	34.0	0.0 -	0.5	27.0 +	3.0	0.0 -	0.0 -	3.0	14	
	15	0.0 -	0.0 -	0.0 -	0.0 -	0.0 -	11.0	0.0 -	0.0 -	12.0	0.0 -	0.0 -	0.0 -	12.5	15	
	16	0.0 -	0.0 -	3.5	0.0 -	0.0 -	1.0	37.5	0.0 -	0.0 -	1.5	0.0 -	0.0 -	28.0	16	
	17	0.0 -	0.0 -	13.0 +	0.0 -	0.0 -	0.0 -	8.0	15.0	0.0 -	7.8	0.0 -	0.0 -	6.5	17	
	18	1.0	0.0 -	5.0	0.0 -	0.0 -	0.0 -	21.5	3.0	7.0	10.0	0.0 -	0.0 -	9.2	18	
	19	8.4	0.0 -	7.0	0.0 -	0.0 -	0.0 -	0.5	16.0	0.0 -	23.0	12.0	0.0 -	2.5	19	
	20	3.0	14.5	0.0 -	0.0 -	4.0	0.0 -	2.0	0.0 -	0.0 -	1.0	0.0 -	16.0	20		
	21	0.0 -	3.5	0.0 -	0.0 -	1.0	29.0	3.0	0.0 -	0.0 -	0.0 -	0.0 -	22.0	21		
	22	0.0 -	0.0 -	0.0 -	0.0 -	0.0 -	9.0	29.5	5.0	0.0 -	0.0 -	0.0 -	38.0 +	22		
	23	0.0 -	0.0 -	0.0 -	0.0 -	0.0 -	0.0 -	7.5	10.5	0.0 -	0.0 -	0.0 -	6.5	23		
	24	0.0 -	4.6	0.0 -	0.0 -	0.0 -	3.0	0.5	4.0	0.0 -	0.0 -	0.0 -	11.0	24		
	25	3.5	0.5	0.0 -	0.0 -	0.0 -	0.5	0.0 -	0.0 -	0.0 -	0.0 -	5.0	0.0 -	0.0 -	25	
	26	0.0 -	5.6	0.0 -	0.0 -	35.0 +	0.0 -	1.0	23.0	0.0 -	0.0 -	0.0 -	0.0 -	0.0 -	26	
	27	0.0 -	16.2 +	0.0 -	0.1	18.5	0.0 -	7.0	1.0	0.0 -	0.0 -	0.0 -	0.0 -	0.0 -	27	
	28	0.0 -	0.0 -	0.5	0.5	0.0 -	0.0 -	7.6	0.0 -	0.0 -	0.0 -	0.0 -	1.5	28		
	29	0.0 -	0.0 -	0.0 -	3.0	0.0 -	78.0 +	8.5	0.0 -	0.0 -	0.0 -	0.0 -	5.0	29		
	30	0.0 -	0.0 -	0.0 -	0.5	0.0 -	0.5	4.0	0.0 -	0.0 -	0.0 -	0.0 -	13.0	30		
	31	0.0 -	0.0 -	2.5	0.0 -	24.0	0.0 -	0.0 -	0.5	0.0 -	0.0 -	0.0 -	36.0	31		
Monatssumme	59.9	44.9	31.5	71.0	160.0	247.5	183.1	120.0	110.2	155.5	0.5 -	275.2+				
Maximum	23.0	16.2	13.0	54.0	35.0	78.0 +	37.0	27.0	36.8	47.5	0.5 -	38.0	mm			
Datum (Tag)	12.	27.	17.	12.	26.	29.	13.	14.	4.	8.	7.	22.				
Niederschlagstage	10	5	5	5	13	16	18	11	9	8	0	23	d			
Niederschlagstage grösser / gleich als:	145 ≥ 0.1		144 ≥ 0.3		82 ≥ 5.0		48 ≥ 10.0		26 ≥ 20.0		2 ≥ 50.0		0 ≥ 100.0		mm	
Jahreswerte:	Gesamtniederschlag (1a): 1459.3 mm						Niederschlagstage (≥ 1.0 mm): 123									



2000-2011	2000	2001	2002	2003	2004	2005	2006	2007	2008	2009	2010	2011	
Jahressumme	1565.8	1983.5	2084.0+	1160.7-	1528.3	1500.5	1530.7	1847.7	1596.2	1572.4	1836.6	1459.3	
Jahresmaximum	59.0	104.0	133.3 +	36.1 -	59.0	131.0	54.0	76.5	97.5	55.0	89.0	78.0	mm
Datum (Tag.Monat)	20.9.	27.6.	3.5.	7.10.	1.6.	22.8.	17.9.	7.8.	15.8.	17.7.	5.8.	29.6.	

Durchschnittliche Jahressumme 2000-2011 (nur vollständige Jahre): 1639 mm Normwert 1961-1990: 1562 mm

