

TEIL 1 :

**NIEDERSCHLÄGE**

## Erläuterungen

Die nachfolgenden Tabellen geben Auskunft über die Niederschlagsdaten aller derzeit bestehenden Niederschlagsmessstationen im Kanton Uri.

Der Tabellenkopf enthält nebst dem Stationsnamen und dem zugehörigen Stationsindikativ die Angaben über das Flussgebiet, die Lage der Station im Landeskoordinatensystem sowie die Stationshöhe in Metern über Meer.

Die Tabelle der täglichen Niederschlagshöhen gibt die Tagessummen in Millimetern (bzw. Litern pro Quadratmeter) für die Zeit zwischen 07:00 Uhr bis 07:00 Uhr des Folgetages an. Am Fuss der Tabelle sind für jeden Monat die gesamte Niederschlagssumme, die grösste tägliche Niederschlagsmenge mit dem betreffenden Kalendertag sowie die Anzahl der Tage mit mehr als einem Millimeter Niederschlag angegeben. Der jeweils höchsten Monatssumme und der höchsten Tagesmenge des Jahres wurde ein + vorangestellt.

Für das gesamte Jahr folgen dann die Anzahl der Tage, an denen die Niederschlagshöhe die Schwellenwerte 0.1 mm, 0.3 mm, 5 mm, 10 mm, 20 mm, 50 mm und 100 mm erreicht oder überschritten hat sowie die Jahressumme und die Gesamtzahl der Niederschlagstage mit einem Millimeter und mehr.

Die Abbildungen geben für das betreffende Jahr die täglichen Niederschlagshöhen (Skalierung links) und eine Summenkurve in Millimetern (Skalierung rechts) sowie die monatlichen Niederschlagssummen (Skalierung links) und die Jahressummen (Skalierung rechts) der 12 letzten Jahre an.

Zwischen den beiden Grafiken sind die Jahressummen und das Jahresmaximum inklusive Datum angegeben. Zum Vergleich sind die durchschnittliche Jahressumme der letzten 12 Jahre und der Normalwert aufgeführt. Dieser entspricht, wenn nichts anderes angegeben ist, der mittleren jährlichen Niederschlagsmenge der Jahre 1961 bis 1990, respektive der mittleren jährlichen Niederschlagsmenge der Jahre 1980 bis 2010 (beide Angaben vorhande). Für die Stationen Bristen und Unterschächen, die 1982 ihren Betrieb aufgenommen haben, wurden die Normalwerte für die Periode 1961 bis 1990 synthetisch ermittelt. D.h. für die fehlenden Jahre wurden Niederschlagsdaten verschiedener umliegender Stationen herangezogen. Das gleiche gilt für die Station Göschenen.

Die Lage der Stationen ist aus der Karte 1 im Teil 5 des Jahrbuchs ersichtlich. Von einer graphischen Darstellung des Niederschlags mittels Isolinien wurde abgesehen, da in einer Hochgebirgslandschaft, wie sie das Kantonsgebiet darstellt, die Niederschlagsverteilung äusserst ungleichmässig ist.

# Übersicht

## Niederschlags-Messstationen der MeteoSchweiz (früher SMA)

SMA-Nr.	MESSSTATION	KOORDINATEN	STATIONS-HÖHE (m ü. M.)	ART*	MESS-PERIODE	SEITE
3140	Urnerboden	712650 / 195250	1395	B	2004-2015	9
4020	Gütsch	690140/167590	2288	A	1955-2015	10
4040	Andermatt	688500/165340	1442	B	<1900-2015	11
4060	Göschener Alp	681240/166800	1745	C	1955-2015	12
4080	Göschenen	687730/169030	1111	C	1985-2015	13
4118	Bristen	696700/180300	828	C	1982-2015	14
4133	Unterschächen	702090/192140	1510	C	1982-2015	15
4140	Altdorf	691000/191750	451	A	<1900-2015	16
4170	Isenthal	685460/196110	778	C	1900-2015	17

---

\* A: automatische Wetterstation  
B: konventionelle Klimastation  
C: Regenmessstation

# Niederschlag: Tagessummen

Flussgebiet: Limmat

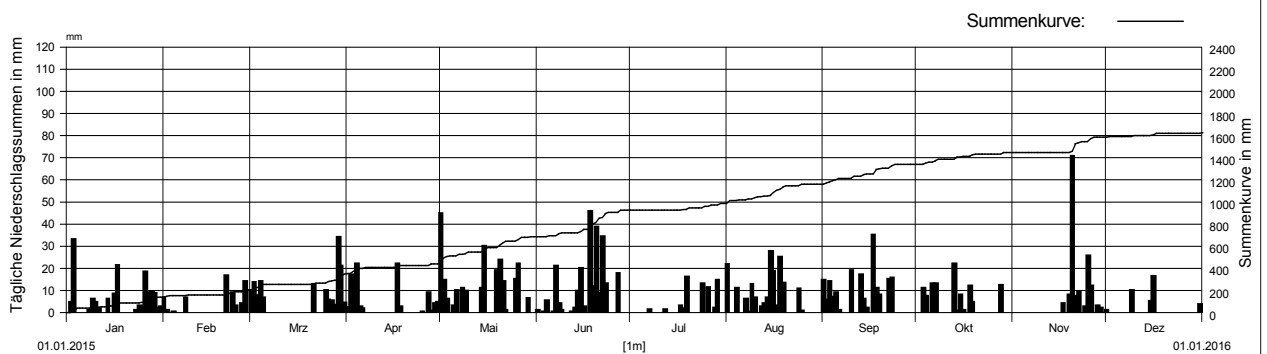
Messstelle: Urnerboden

Messstellen-Nr.: 3140

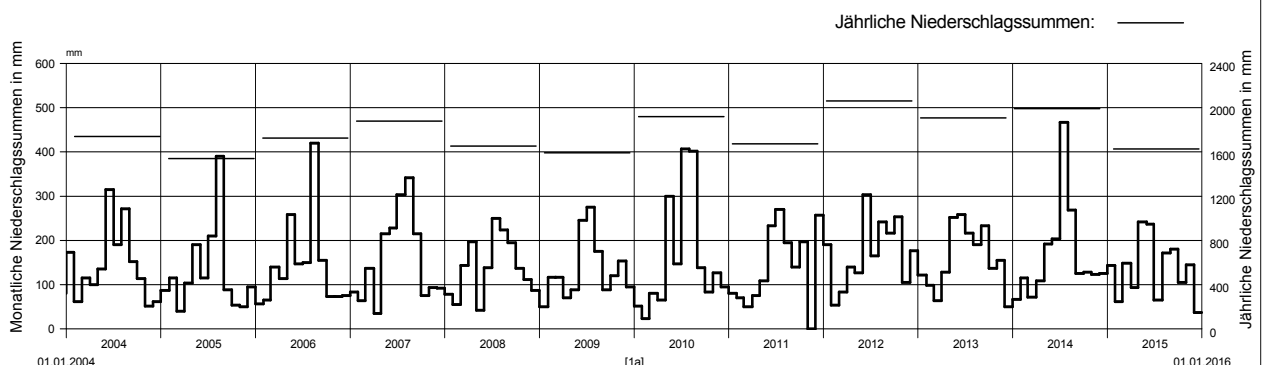
Koordinaten: 712 650 / 195 250

Stationshöhe: 1395 m ü.M.

2015		Januar	Februar	März	April	Mai	Juni	Juli	August	September	Oktober	November	Dezember			
Tages- summen Niederschlag in mm	1	0.0 -	6.8	9.8	2.2	44.5 +	1.0	0.0 -	21.8	14.5	0.0 -	0.0 -	0.9	1		
	2	4.5	1.1	13.8	17.0	14.7	0.0 -	0.0 -	0.1	5.8	0.0 -	0.0 -	0.0 -	2		
	3	33.0 +	0.0 -	7.8	5.0	6.0	0.3	0.0 -	0.0 -	14.0	11.1	0.0 -	0.0 -	3		
	4	0.0 -	0.3	13.9	22.0 +	0.0 -	5.5	0.0 -	11.0	7.0	7.5	0.0 -	0.0 -	4		
	5	0.0 -	0.1	6.5	2.5	3.0	0.0 -	0.0 -	0.0 -	9.0	0.0 -	0.0 -	0.0 -	5		
	6	0.0 -	0.0 -	0.0 -	1.8	10.0	0.0 -	0.4	0.0 -	1.0	13.0	0.0 -	0.0 -	6		
	7	0.0 -	0.0 -	0.0 -	0.0 -	0.0 -	0.0 -	21.0	1.5	6.0	0.0 -	13.0	0.0 -	7		
	8	1.0	6.8	0.0 -	0.0 -	11.0	4.0	0.1	0.3	0.0 -	0.0 -	0.0 -	0.0 -	8		
	9	6.0	0.0 -	0.0 -	0.0 -	9.7	0.9	0.0 -	12.5	0.0 -	0.0 -	0.0 -	10.0	9		
	10	4.5	0.0 -	0.0 -	0.0 -	0.0 -	0.0 -	0.0 -	6.5	19.0	0.0 -	0.0 -	0.0 -	10		
	11	2.0	0.0 -	0.0 -	0.0 -	0.0 -	0.0 -	0.0 -	0.0 -	0.0 -	0.0 -	0.0 -	0.0 -	11		
	12	0.0 -	0.0 -	0.0 -	0.0 -	0.0 -	0.0 -	0.2	1.5	2.8	0.0 -	0.0 -	0.0 -	12		
	13	0.0 -	0.0 -	0.0 -	0.0 -	0.0 -	0.0 -	1.9	0.0 -	4.0	17.0	22.0 +	0.0 -	13		
	14	6.0	0.0 -	0.0 -	0.0 -	11.0	9.8	0.0 -	6.8	6.0	0.8	0.0 -	0.0 -	14		
	15	0.0 -	0.0 -	0.0 -	0.0 -	0.0 -	30.0	20.0	0.0 -	27.8 +	1.9	7.9	0.0 -	15		
	16	8.3	0.0 -	0.0 -	0.0 -	0.0 -	0.0 -	2.8	0.0 -	18.8	0.0 -	0.9	0.0 -	16		
	17	21.5	0.0 -	0.0 -	22.0 +	0.0 -	0.0 -	0.0 -	3.0	3.0	35.0 +	0.0 -	4.0	17		
	18	0.0 -	0.0 -	0.0 -	2.5	0.0 -	45.8 +	1.6	25.0	11.0	12.0	0.0 -	0.0 -	18		
	19	0.0 -	0.0 -	0.0 -	0.0 -	19.0	11.6	16.0 +	13.5	7.9	4.5	8.0	0.0 -	19		
	20	0.0 -	0.0 -	0.0 -	0.0 -	23.7	38.5	0.0 -	0.0 -	0.0 -	0.0 -	70.5 +	0.0 -	20		
	21	0.0 -	16.5 +	12.7	0.0 -	14.0	8.5	0.0 -	0.0 -	0.0 -	0.0 -	7.5	0.1	21		
	22	0.0 -	0.0 -	0.0 -	0.0 -	0.9	34.2	0.0 -	0.0 -	15.0	0.0 -	9.4	0.0 -	22		
	23	1.1	8.9	0.0 -	0.0 -	0.0 -	13.0	0.0 -	0.1	15.8	0.0 -	0.0 -	0.0 -	23		
	24	3.0	3.0	0.0 -	0.0 -	0.0 -	0.0 -	13.0	10.6	0.0 -	0.0 -	2.5	0.0 -	24		
	25	2.8	0.0 -	10.0	0.4	15.0	0.0 -	0.0 -	0.5	0.0 -	0.0 -	25.7	0.0 -	25		
	26	18.2	4.1	5.7	0.0 -	22.0	0.0 -	11.2	0.0 -	0.0 -	0.0 -	12.0	0.0 -	26		
	27	9.0	14.0	5.5	9.0	0.0 -	17.7	0.0 -	0.0 -	0.0 -	0.0 -	0.0 -	0.0 -	27		
	28	9.2	0.0 -	3.4	0.8	0.0 -	0.0 -	2.0	0.0 -	0.0 -	12.2	3.0	0.0 -	28		
	29	8.5		34.0 +	3.9	6.4	0.0 -	14.5	0.0 -	0.0 -	0.0 -	2.0	0.0 -	29		
	30	2.0		21.1	4.5	0.0 -	0.0 -	0.0 -	0.0 -	0.0 -	0.0 -	0.0 -	0.0 -	30		
	31	2.5		4.4		0.0 -	0.0 -	0.0 -	0.0 -	0.0 -	0.0 -	0.0 -	3.6	31		
Monatssumme		143.1	61.6	148.6	93.6	240.9+	237.1	64.4	171.1	179.9	104.9	144.6	35.9 -			
Maximum		33.0	16.5	34.0	22.0	44.5	45.8	16.0 -	27.8	35.0	22.0	70.5 +	16.3	mm		
Datum (Tag)		3.	21.	29.	4.	1.	18.	19.	15.	17.	13.	20.	16.			
Niederschlagstage		18	8	13	11	15	15	9	14	15	9	10	4	d		
Niederschlagstage grösser / gleich als:		159 ≥0.1		153 ≥0.3		100 ≥5.0		64 ≥10.0		22 ≥20.0		1 ≥50.0		0 ≥100.0		mm
Jahreswerte:		Gesamtniederschlag (1a): 1625.7 mm						Niederschlagstage (≥1.0 mm): 141								



2004-2015	2004	2005	2006	2007	2008	2009	2010	2011	2012	2013	2014	2015	
Jahressumme	1737.4	1537.3-	1728.1	1880.2	1655.7	1592.2	1919.1	1673.8	2058.0+	1904.0	1992.5	1625.7	mm
Jahresmaximum	55.3	115.6 +	64.5	64.5	52.2 -	93.5	93.6	57.8	91.3	96.4	64.5	70.5	
Datum (Tag.Monat)	26.8.	22.8.	16.9.	15.6.	12.7.	17.7.	5.8.	13.7.	9.10.	1.6.	31.8.	20.11.	
Durchschnittliche Jahressumme 2004-2015 (nur vollständige Jahre): 1775 mm			Normwert 1981-2010: 1836 mm					Normwert 1961-1990: 1814 mm					



# Niederschlag: Tagessummen

Flussgebiet: Reuss

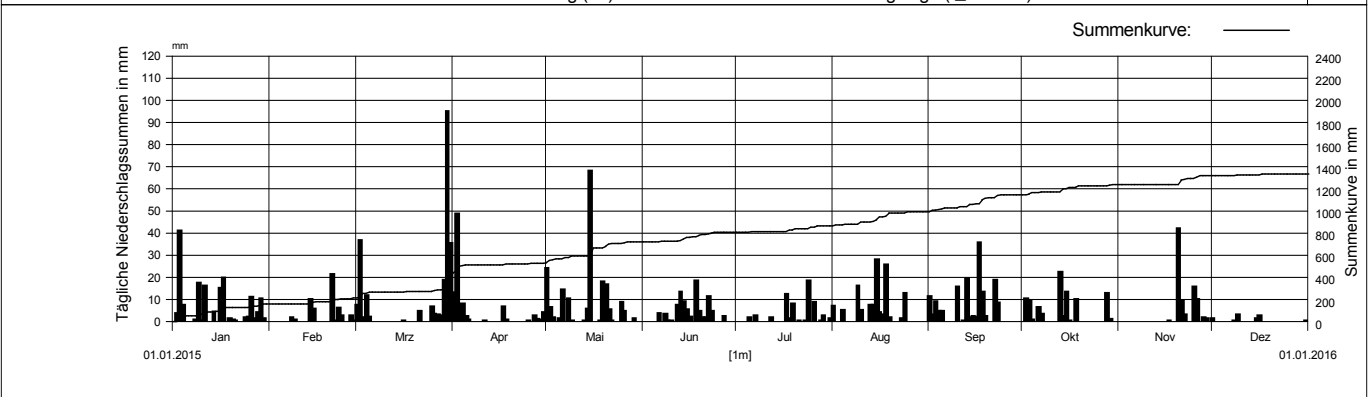
Messstelle: Gütsch

Messstellen-Nr.: 4020

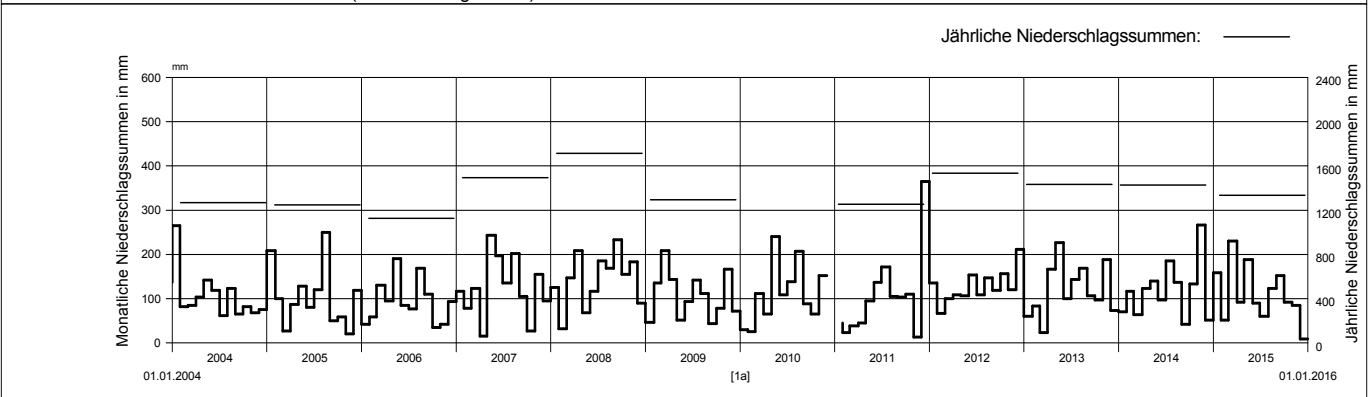
Koordinaten: 690 140 / 167 590

Stationshöhe: 2288 m ü.M.

2015		Januar	Februar	März	April	Mai	Juni	Juli	August	September	Oktober	November	Dezember		
Tages- summen Niederschlag in mm	1	0.0 -	0.0 -	7.4	13.0	24.1	0.0 -	0.0 -	7.0	11.2	0.0 -	0.0 -	1.2	1	
	2	3.6	0.0 -	36.6	48.8 +	6.3	0.0 -	0.0 -	0.0 -	3.1	10.2	0.0 -	0.0 -	2	
	3	40.9 +	0.0 -	1.6	3.4	1.7	0.0 -	0.0 -	0.0 -	8.9	9.4	0.0 -	0.0 -	3	
	4	7.4	0.0 -	11.6	8.0	0.1	0.0 -	0.0 -	4.9	4.5	0.6	0.0 -	0.0 -	4	
	5	0.0 -	0.1	2.1	2.2	1.5	0.0 -	1.7	0.0 -	4.5	0.0 -	0.0 -	0.0 -	5	
	6	0.0 -	0.0 -	0.0 -	0.6	14.4	3.7	0.0 -	0.0 -	0.0 -	6.4	0.0 -	0.0 -	6	
	7	0.0 -	0.0 -	0.0 -	0.0 -	0.0 -	0.0 -	2.6	0.0 -	0.0 -	3.5	0.0 -	0.0 -	7	
	8	0.8	1.8	0.0 -	0.0 -	10.3	3.5	0.1	0.1	0.0 -	0.0 -	0.0 -	0.3	8	
	9	17.2	0.8	0.0 -	0.0 -	0.4	0.2	0.0 -	16.0	0.0 -	0.0 -	0.0 -	2.9 +	9	
	10	0.2	0.0 -	0.0 -	0.0 -	0.0 -	0.3	0.0 -	5.0	15.8	0.0 -	0.0 -	0.0 -	10	
	11	15.9	0.0 -	0.0 -	0.3	0.0 -	0.0 -	0.0 -	0.0 -	0.0 -	0.0 -	0.0 -	0.0 -	11	
	12	0.0 -	0.0 -	0.0 -	0.0 -	0.0 -	7.5	1.6	0.0 -	0.4	0.0 -	0.0 -	0.0 -	12	
	13	0.0 -	0.0 -	0.0 -	0.0 -	0.4	13.3	0.1	7.2	19.5	22.4 +	0.0 -	0.0 -	13	
	14	4.3	10.1	0.0 -	0.0 -	5.6	9.1	0.0 -	7.4	1.8	2.3	0.0 -	0.0 -	14	
	15	0.0 -	5.7	0.1	0.0 -	68.0 +	5.4	0.0 -	27.9 +	2.3	13.5	0.0 -	1.3	15	
	16	14.9	0.0 -	0.2	0.0 -	0.0 -	2.0	0.0 -	4.1	2.1	0.4	0.0 -	2.6	16	
	17	19.8	0.0 -	0.1	6.5	0.0 -	0.0 -	12.4	2.9	35.6 +	0.0 -	0.2	0.0 -	17	
	18	0.0 -	0.0 -	0.0 -	0.7	0.4	18.3 +	1.4	25.6	13.2	9.9	0.0 -	0.0 -	18	
	19	1.3	0.0 -	0.0 -	0.0 -	18.0	4.8	8.1	1.6	2.2	0.0 -	0.1	0.0 -	19	
	20	0.6	0.0 -	0.1	0.0 -	16.7	1.7	0.0 -	0.1	0.1	0.0 -	42.1 +	0.0 -	20	
	21	0.3	21.3 +	4.6	0.0 -	5.2	1.6	0.4	0.0 -	0.0 -	0.0 -	9.5	0.0 -	21	
	22	0.0 -	0.4	0.0 -	0.0 -	0.3	11.4	0.0 -	0.0 -	18.5	0.0 -	3.1	0.0 -	22	
	23	0.0 -	6.0	0.0 -	0.0 -	0.0 -	4.5	0.2	1.5	8.4	0.0 -	0.0 -	0.0 -	23	
	24	1.7	2.7	0.0 -	0.0 -	0.1	0.0 -	18.2 +	12.7	0.0 -	0.0 -	0.1	0.0 -	24	
	25	2.0	0.0 -	6.7	0.4	8.5	0.0 -	0.0 -	0.0 -	0.0 -	0.0 -	15.8	0.0 -	25	
	26	10.9	0.0 -	3.5	0.0 -	4.7	0.0 -	8.6	0.0 -	0.0 -	0.0 -	10.1	0.0 -	26	
	+ Maximum	27	1.4	2.5	3.0	2.6	0.0 -	2.4	0.0 -	0.0 -	0.0 -	0.0 -	0.0 -	27	
	- Minimum	28	3.9	0.4	2.7	0.9	0.0 -	0.0 -	0.2	0.0 -	0.0 -	12.7	1.8	0.0 -	28
		29	10.4		18.7	0.6	1.4	0.0 -	2.5	0.0 -	0.0 -	1.0	1.5	0.0 -	29
		30	1.2		95.0 +	3.9	0.0 -	0.0 -	0.0 -	0.0 -	0.0 -	0.0 -	0.0 -	0.0 -	30
		31	0.0 -		35.3		0.1		1.5	0.0 -		0.0 -	0.4		31
Monatssumme		158.7	51.8	229.3+	91.9	188.2	89.7	59.6	124.0	152.1	92.3	84.3	8.7 -		
Maximum		40.9	21.3	95.0 +	48.8	68.0	18.3	18.2	27.9	35.6	22.4	42.1	2.9 -	mm	
Datum (Tag)		3.	21.	30.	2.	15.	18.	24.	15.	17.	13.	20.	9.		
Niederschlagstage		16	7	13	8	14	14	10	13	15	10	7	4	d	
Niederschlagstage grösser / gleich als:		174 ≥0.1		154 ≥0.3		70 ≥5.0		44 ≥10.0		13 ≥20.0		2 ≥50.0		0 ≥100.0	
Jahreswerte:		Gesamtniederschlag (1a): 1330.6 mm						Niederschlagstage (≥1.0 mm): 131							



2004-2015	2004	2005	2006	2007	2008	2009	2010	2011	2012	2013	2014	2015	
Jahressumme	1269.4	1249.0	1124.7 -	1491.4	1713.6+	1295.6	--	1251.2	1533.1	1432.7	1427.3	1330.6	mm
Jahresmaximum	86.3	81.4	45.7 -	60.7	91.5	91.8	61.9	50.0	75.6	93.9	117.9 +	95.0	
Datum (Tag.Monat)	5.5.	21.1.	22.5.	10.11.	21.11.	30.11.	2.5.	22.12.	20.1.	19.4.	5.11.	30.3.	
Durchschnittliche Jahressumme 2004-2015 (nur vollständige Jahre):	1374 mm			Normwert 1981-2010: 1453 mm				Normwert 1961-1990: 1479 mm					



# Niederschlag: Tagessummen

Flussgebiet: Reuss

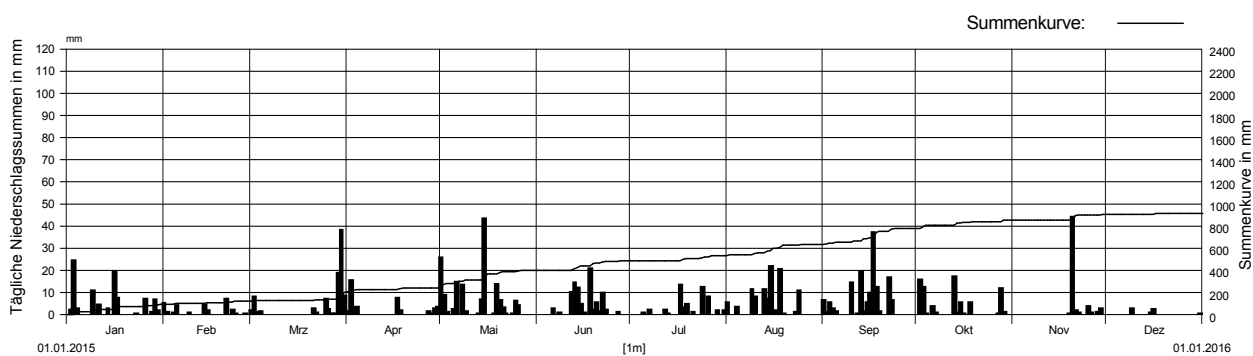
Messstelle: Andermatt

Messstellen-Nr.: 4040

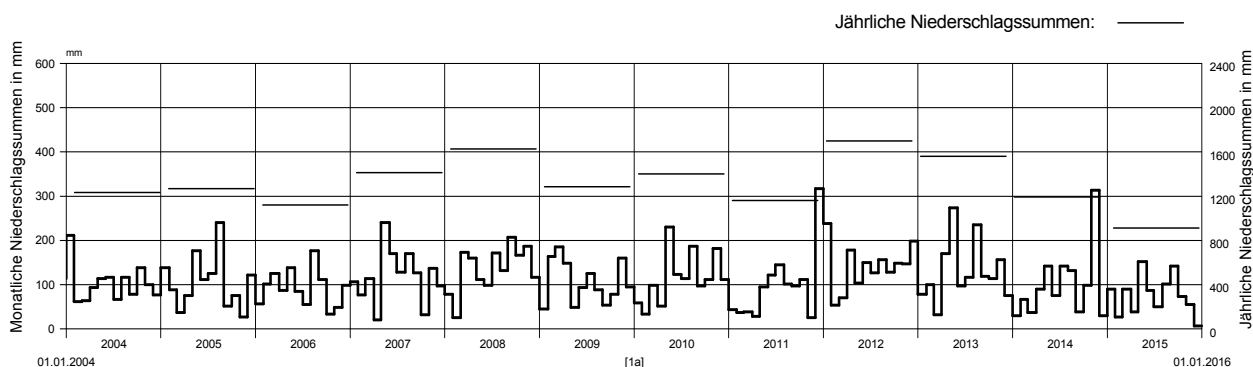
Koordinaten: 688 500 / 165 340

Stationshöhe: 1442 m ü.M.

2015		Januar	Februar	März	April	Mai	Juni	Juli	August	September	Oktober	November	Dezember			
Tages- summen Niederschlag in mm	1	0.0 -	5.1	1.8	1.2	25.7	0.0 -	0.0 -	5.4	6.4	0.0 -	0.0 -	0.1	1		
	2	2.1	0.9	8.0	15.2 +	8.8	0.0 -	0.0 -	0.1	1.1	15.8	0.0 -	0.0 -	2		
	3	24.3 +	0.0 -	1.0	2.2	1.0	0.0 -	0.0 -	0.0 -	5.3	12.4	0.0 -	0.0 -	3		
	4	2.5	0.5	1.2	3.3	0.1	0.0 -	0.0 -	3.3	2.8	0.2	0.0 -	0.0 -	4		
	5	0.0 -	4.1	0.0 -	0.0 -	2.4	0.0 -	0.5	0.1	1.2	0.0 -	0.0 -	0.0 -	5		
	6	0.0 -	0.0 -	0.0 -	0.0 -	14.8	2.5	0.0 -	0.0 -	0.0 -	3.6	0.0 -	0.0 -	6		
	7	0.0 -	0.0 -	0.0 -	0.0 -	0.0 -	0.0 -	1.9	0.0 -	0.0 -	0.7	0.0 -	0.0 -	7		
	8	0.1	0.0 -	0.0 -	0.0 -	13.3	0.8	0.0 -	0.0 -	0.0 -	0.0 -	0.0 -	0.0 -	8		
	9	10.7	0.5	0.0 -	0.0 -	1.5	0.0 -	0.0 -	11.3	0.0 -	0.0 -	0.0 -	2.7 +	9		
	10	0.4	0.0 -	0.0 -	0.0 -	0.0 -	0.0 -	0.0 -	8.1	14.2	0.0 -	0.0 -	0.0 -	10		
	11	4.4	0.0 -	0.0 -	0.1	0.0 -	0.0 -	0.0 -	0.0 -	0.0 -	0.0 -	0.0 -	0.0 -	11		
	12	0.0 -	0.0 -	0.0 -	0.0 -	0.0 -	0.0 -	10.1	1.9	0.0 -	0.2	0.0 -	0.0 -	12		
	13	0.0 -	0.0 -	0.0 -	0.0 -	0.3	14.2	0.2	11.4	19.5	16.9 +	0.0 -	0.0 -	13		
	14	2.6	4.3	0.0 -	0.0 -	6.6	12.1	0.0 -	6.9	1.4	0.8	0.0 -	0.0 -	14		
	15	0.0 -	1.8	0.0 -	0.0 -	43.2 +	4.5	0.0 -	21.8 +	5.2	5.3	0.0 -	0.8	15		
	16	19.4	0.0 -	0.0 -	0.0 -	0.0 -	0.6	0.0 -	0.3	9.8	0.2	0.0 -	2.3	16		
	17	7.2	0.0 -	0.0 -	7.4	0.0 -	0.0 -	13.4 +	1.6	37.0 +	0.0 -	0.0 -	0.0 -	17		
	18	0.0 -	0.0 -	0.0 -	1.6	0.2	20.6 +	2.9	20.3	12.4	5.2	0.0 -	0.0 -	18		
	19	0.0 -	0.0 -	0.0 -	0.0 -	13.6	1.9	4.6	0.2	1.4	0.0 -	0.4	0.0 -	19		
	20	0.0 -	0.0 -	0.0 -	0.0 -	6.4	5.3	0.0 -	0.0 -	0.1	0.0 -	43.9 +	0.0 -	20		
	21	0.0 -	7.1 +	2.5	0.0 -	3.0	1.2	1.0	0.0 -	0.0 -	0.0 -	1.8	0.0 -	21		
	22	0.1	0.1	0.6	0.0 -	0.4	9.7	0.0 -	0.0 -	16.8	0.0 -	0.7	0.0 -	22		
	23	0.2	2.0	0.0 -	0.0 -	0.0 -	2.0	0.1	1.0	6.2	0.0 -	0.0 -	0.0 -	23		
	24	0.0 -	0.2	0.0 -	0.0 -	0.2	0.0 -	12.4	10.5	0.0 -	0.0 -	0.0 -	0.0 -	24		
	25	0.0 -	0.0 -	6.9	0.1	6.0	0.0 -	0.0 -	0.0 -	0.0 -	0.0 -	3.8	0.0 -	25		
	26	7.1	0.0 -	2.2	0.1	4.0	0.0 -	7.9	0.0 -	0.0 -	0.0 -	0.5	0.0 -	26		
	27	0.1	0.2	0.2	1.5	0.0 -	0.9	0.0 -	0.0 -	0.0 -	0.2	0.0 -	0.0 -	27		
	28	1.0	0.0 -	0.3	0.3	0.0 -	0.0 -	0.0 -	0.0 -	0.0 -	11.6	0.9	0.0 -	28		
	29	6.5		18.7	2.6	0.0 -	0.0 -	1.7	0.0 -	0.0 -	1.0	2.6	0.0 -	29		
	30	1.8		37.9 +	3.2	0.0 -	0.0 -	0.1	0.0 -	0.0 -	0.0 -	0.0 -	0.0 -	30		
	31	0.0 -		8.3		0.0 -		1.6		0.0 -			0.2	31		
Monatssumme		90.5	26.8	89.6	38.8	151.5+	86.4	50.2	102.3	141.0	73.9	54.6	6.1 -			
Maximum		24.3	7.1	37.9	15.2	43.2	20.6	13.4	21.8	37.0	16.9	43.9 +	2.7 -	mm		
Datum (Tag)		3.	21.	30.	2.	15.	18.	17.	15.	17.	13.	20.	9.			
Niederschlagstage		12	6	10	9	14	11	10	11	15	8	4	2	d		
Niederschlagstage grösser / gleich als:		160 ≥0.1		133 ≥0.3		58 ≥5.0		32 ≥10.0		9 ≥20.0		0 ≥50.0		0 ≥100.0		mm
Jahreswerte:		Gesamtniederschlag (1a): 911.7 mm					Niederschlagstage (≥1.0 mm): 112									



2004-2015	2004	2005	2006	2007	2008	2009	2010	2011	2012	2013	2014	2015	
Jahressumme	1235.3	1265.0	1118.2	1414.9	1625.8	1283.7	1397.7	1161.1	1696.7+	1562.7	1193.1	911.7 -	mm
Jahresmaximum	73.2	45.3	45.9	55.0	71.3	80.0	58.7	47.5	71.8	65.2	98.0 +	43.9 -	
Datum (Tag.Monat)	26.10.	2.8.	8.12.	14.5.	29.10.	17.7.	15.11.	26.8.	26.9.	19.4.	4.11.	20.11.	
Durchschnittliche Jahressumme 2004-2015 (nur vollständige Jahre): 1322 mm			Normwert 1981-2010: 1552 mm				Normwert 1961-1990: 1422 mm						



# Niederschlag: Tagessummen

Flussgebiet: Reuss

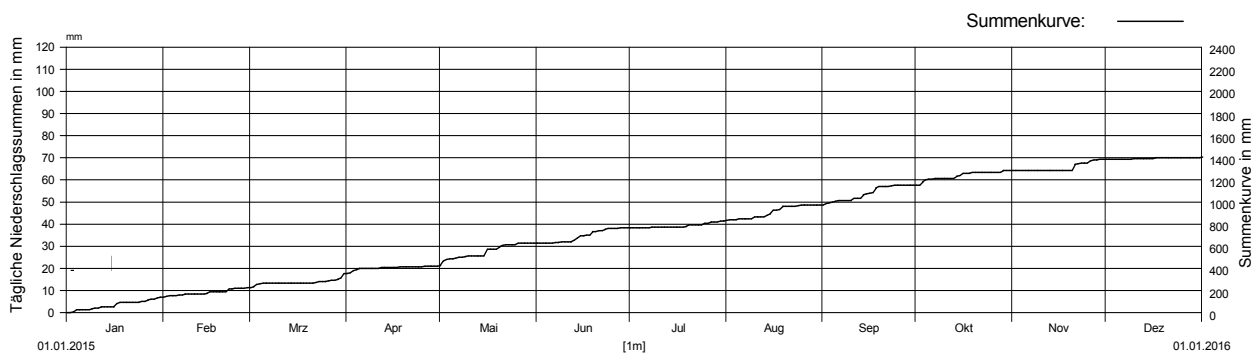
Messstelle: Göschener Alp

Messstellen-Nr.: 4060

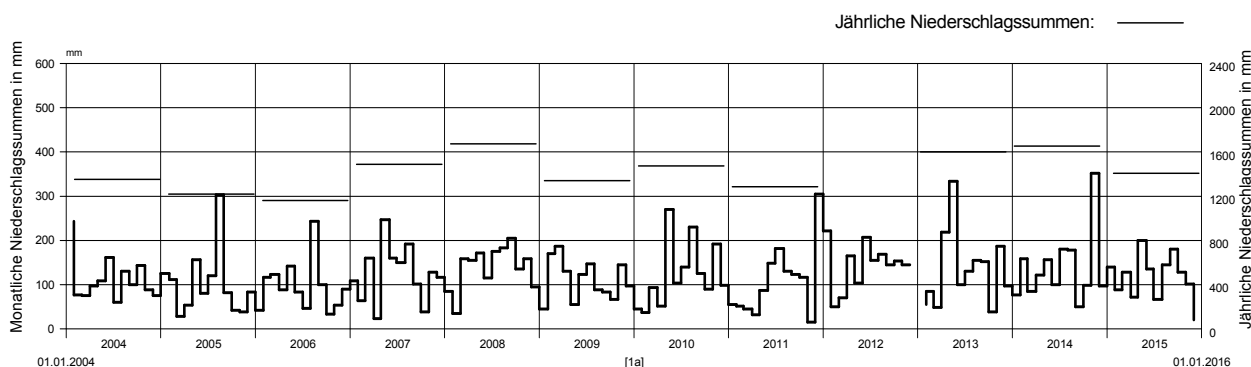
Koordinaten: 681 240 / 166 800

Stationshöhe: 1745 m ü.M.

2015		Januar	Februar	März	April	Mai	Juni	Juli	August	September	Oktober	November	Dezember			
Tages- summen Niederschlag in mm	1	0.0 -	7.2	8.7	2.8	41.0	0.0 -	0.0 -	9.3	14.1	0.0 -	0.0 -	0.8	1		
	2	5.9	6.3	16.5	21.1 +	12.9	0.0 -	1.1	0.0 -	3.5	26.2 +	0.0 -	0.0 -	2		
	3	18.8	0.0 -	3.8	4.5	3.3	0.0 -	0.0 -	0.0 -	8.9	18.8	0.0 -	0.0 -	3		
	4	5.0	0.7	6.8	16.0	0.1	0.0 -	0.0 -	6.3	6.5	4.6	0.0 -	0.0 -	4		
	5	0.0 -	6.9	1.1	2.0	4.7	0.0 -	4.1	0.0 -	7.4	0.0 -	0.0 -	0.0 -	5		
	6	0.0 -	0.1	0.0 -	0.0 -	7.5	4.3	0.0 -	0.0 -	0.0 -	5.5	0.0 -	0.0 -	6		
	7	0.0 -	3.1	0.0 -	0.0 -	0.0 -	0.0 -	3.3	0.0 -	0.0 -	4.3	0.0 -	0.0 -	7		
	8	0.9	0.8	0.0 -	0.0 -	12.4	6.5	0.1	0.0 -	0.0 -	0.1	0.0 -	0.4	8		
	9	11.5	0.5	0.0 -	0.0 -	0.3	0.3	0.0 -	18.4	0.0 -	0.0 -	0.0 -	5.9	9		
	10	0.1	0.0 -	0.0 -	0.0 -	0.0 -	0.4	0.0 -	2.9	15.7	0.2	0.0 -	0.0 -	10		
	11	8.1	0.0 -	0.0 -	0.8	0.0 -	0.0 -	0.0 -	0.8	0.0 -	0.0 -	0.0 -	0.0 -	11		
	12	0.0 -	0.0 -	0.0 -	0.0 -	0.0 -	13.4	1.3	0.0 -	0.7	0.0 -	0.0 -	0.0 -	12		
	13	0.0 -	0.0 -	0.0 -	0.0 -	0.4	17.9	0.2	13.9	36.3	18.7	0.0 -	0.0 -	13		
	14	3.4	9.9	0.0 -	0.0 -	4.2	21.0	0.0 -	11.9	3.3	3.9	0.0 -	0.0 -	14		
	15	0.0 -	13.0	0.0 -	0.0 -	61.2 +	3.1	0.0 -	29.5 +	11.5	20.6	0.0 -	3.3	15		
	16	25.0 +	0.0 -	0.2	2.1	0.0 -	6.5	0.0 -	6.0	2.3	0.6	0.0 -	6.5 +	16		
	17	15.1	0.0 -	0.4	9.0	0.0 -	0.0 -	1.9	5.4	40.5 +	0.0 -	0.5	0.0 -	17		
	18	0.0 -	0.0 -	0.0 -	1.2	0.3	31.3 +	3.8	28.2	11.5	9.6	0.0 -	0.0 -	18		
	19	0.0 -	0.0 -	0.0 -	0.0 -	15.7	1.5	11.0	0.0 -	0.7	0.0 -	1.7	0.0 -	19		
	20	0.0 -	0.0 -	0.0 -	0.0 -	16.3	4.6	0.0 -	0.0 -	0.0 -	0.0 -	53.0 +	0.0 -	20		
	21	0.2	21.7 +	10.5	0.0 -	3.8	3.1	2.0	0.0 -	0.0 -	0.0 -	7.9	0.0 -	21		
	22	0.0 -	0.9	1.2	0.0 -	0.2	13.8	1.1	0.0 -	11.4	0.0 -	6.8	0.0 -	22		
	23	0.0 -	5.5	0.0 -	0.0 -	0.3	3.9	0.0 -	5.4	6.4	0.0 -	0.0 -	0.0 -	23		
	24	6.2	2.6	0.0 -	0.0 -	0.1	0.0 -	11.6	6.2	0.0 -	0.0 -	0.8	0.0 -	24		
	25	1.9	0.4	8.6	1.1	10.9	0.0 -	0.3	0.3	0.0 -	0.0 -	18.4	0.0 -	25		
	26	10.6	0.7	6.8	1.2	3.8	0.0 -	12.0 +	0.0 -	0.0 -	0.0 -	8.8	0.0 -	26		
	27	4.3	7.3	2.2	1.5	0.0 -	4.2	0.0 -	0.0 -	0.0 -	0.4	0.0 -	0.0 -	27		
	28	6.1	0.0 -	3.0	0.9	0.0 -	0.0 -	1.0	0.0 -	0.0 -	15.3	1.8	0.0 -	28		
	29	11.3		17.4	0.5	1.1	0.0 -	5.5	0.0 -	0.0 -	0.3	1.2	0.0 -	29		
	30	4.7		37.4 +	6.7	0.0 -	0.0 -	0.2	0.0 -	0.0 -	0.0 -	0.0 -	0.0 -	30		
	31	1.0		4.3		0.0 -	0.0 -	5.6	0.0 -	0.0 -	0.0 -	2.8		31		
Monatssumme		140.1	87.6	128.9	71.4	200.5+	135.8	66.1	144.5	180.7	129.1	100.9	19.7 -			
Maximum		25.0	21.7	37.4	21.1	61.2 +	31.3	12.0	29.5	40.5	26.2	53.0	6.5 -	mm		
Datum (Tag)		16.	21.	30.	2.	15.	18.	26.	15.	17.	2.	20.	16.			
Niederschlagstage		16	10	14	12	14	14	14	12	14	10	8	4	d		
Niederschlagstage grösser / gleich als:		183 ≥0.1		171 ≥0.3		87 ≥5.0		48 ≥10.0		15 ≥20.0		2 ≥50.0		0 ≥100.0		mm
Jahreswerte:		Gesamtniederschlag (1a): 1405.3 mm						Niederschlagstage (≥1.0 mm): 142								



2004-2015	2004	2005	2006	2007	2008	2009	2010	2011	2012	2013	2014	2015	
Jahressumme	1356.4	1220.0	1160.8-	1487.9	1672.9+	1338.2	1473.3	1284.5	--	1601.6	1651.7	1405.3	
Jahresmaximum	80.6	59.5	45.7 -	58.0	57.5	71.0	55.4	63.5	57.0	90.0	125.8 +	61.2	mm
Datum (Tag.Monat)	26.10.	1.8.	19.2.	1.3.	6.9.	17.7.	14.8.	26.8.	3.6.	19.4.	4.11.	15.5.	
Durchschnittliche Jahressumme 2004-2015 (nur vollständige Jahre): 1423 mm			Normwert 1981-2010: 1567 mm				Normwert 1961-1990: 1555 mm						



# Niederschlag: Tagessummen

Flussgebiet: Reuss

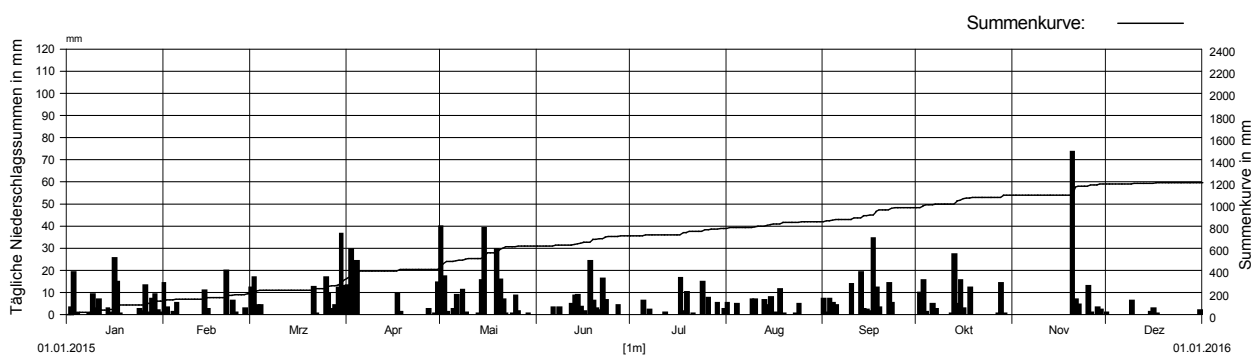
Messstelle: Göschenen

Messstellen-Nr.: 4080

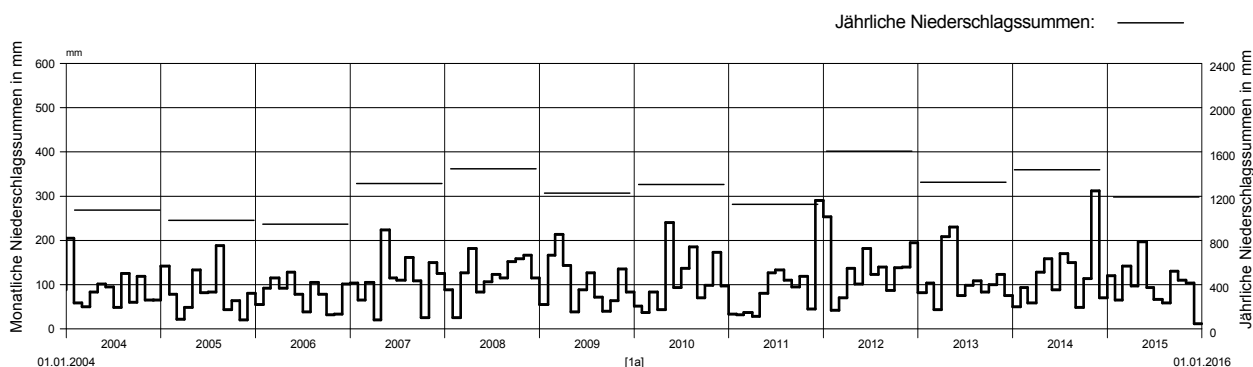
Koordinaten: 687 730 / 169 030

Stationshöhe: 1111 m ü.M.

2015		Januar	Februar	März	April	Mai	Juni	Juli	August	September	Oktober	November	Dezember		
Tages- summen Niederschlag in mm	1	0.0 -	13.9	11.9	12.9	39.6 +	0.0 -	0.0 -	5.1	6.9	0.0 -	0.0 -	0.7	1	
	2	3.1	3.1	16.5	29.2 +	16.9	0.0 -	0.0 -	0.0 -	0.5	9.6	0.0 -	0.0 -	2	
	3	18.9	0.0 -	4.1	3.5	1.0	0.0 -	0.0 -	0.0 -	6.9	15.4	0.0 -	0.0 -	3	
	4	0.2	1.1	4.0	24.1	0.0 -	0.0 -	0.0 -	4.6	4.9	0.9	0.0 -	0.0 -	4	
	5	0.0 -	5.1	0.1	0.0 -	2.4	0.0 -	6.1	0.0 -	3.9	0.0 -	0.0 -	0.0 -	5	
	6	0.0 -	0.0 -	0.0 -	0.0 -	8.8	3.0	0.0 -	0.0 -	0.0 -	4.7	0.0 -	0.0 -	6	
	7	0.0 -	0.0 -	0.0 -	0.0 -	0.0 -	0.0 -	2.0	0.0 -	0.0 -	2.4	0.0 -	0.0 -	7	
	8	0.2	0.0 -	0.0 -	0.0 -	10.9	2.9	0.0 -	0.0 -	0.0 -	0.0 -	0.0 -	0.0 -	8	
	9	9.0	0.0 -	0.0 -	0.0 -	0.6	0.0 -	0.0 -	6.7	0.0 -	0.0 -	0.0 -	5.9 +	9	
	10	2.7	0.0 -	0.0 -	0.0 -	0.0 -	0.0 -	0.0 -	6.8	13.7	0.1	0.0 -	0.0 -	10	
	11	6.7	0.0 -	0.0 -	0.0 -	0.0 -	0.0 -	0.0 -	0.0 -	0.0 -	0.0 -	0.0 -	0.0 -	11	
	12	0.0 -	0.0 -	0.0 -	0.0 -	0.0 -	0.0 -	4.7	0.7	0.0 -	0.0 -	0.0 -	0.0 -	12	
	13	0.0 -	0.0 -	0.0 -	0.0 -	0.3	8.2	0.0 -	6.2	18.9	27.1 +	0.0 -	0.0 -	13	
	14	2.6	10.5	0.0 -	0.0 -	15.3	8.8	0.0 -	4.0	2.4	4.6	0.0 -	0.0 -	14	
	15	0.5	2.2	0.0 -	0.0 -	39.0	3.2	0.0 -	7.8	1.9	15.4	0.0 -	0.9	15	
	16	25.3 +	0.0 -	0.0 -	0.0 -	0.0 -	1.3	0.0 -	0.3	1.5	2.8	0.0 -	2.6	16	
	17	14.7	0.0 -	0.0 -	9.3	0.0 -	0.0 -	16.4 +	0.7	34.2 +	0.0 -	0.0 -	0.2	17	
	18	0.2	0.0 -	0.0 -	1.0	0.0 -	24.1 +	1.5	11.2 +	11.9	12.1	0.0 -	0.0 -	18	
	19	0.0 -	0.0 -	0.0 -	0.0 -	29.2	6.1	10.1	0.2	3.1	0.0 -	0.1	0.0 -	19	
	20	0.0 -	0.0 -	0.0 -	0.0 -	15.7	2.6	0.0 -	0.0 -	0.1	0.0 -	73.4 +	0.0 -	20	
	21	0.0 -	19.8 +	12.3	0.0 -	6.7	1.6	0.4	0.0 -	0.0 -	0.0 -	6.7	0.0 -	21	
	22	0.1	0.1	0.4	0.0 -	0.3	16.0	0.0 -	0.0 -	13.9	0.0 -	4.2	0.0 -	22	
	23	0.0 -	6.0	0.0 -	0.0 -	0.1	6.4	0.0 -	0.2	5.1	0.0 -	0.0 -	0.0 -	23	
	24	2.4	0.6	0.0 -	0.0 -	0.3	0.0 -	14.5	4.6	0.0 -	0.0 -	0.0 -	0.0 -	24	
	25	1.3	0.0 -	16.5	0.0 -	8.2	0.0 -	0.0 -	0.0 -	0.0 -	0.0 -	12.7	0.0 -	25	
	26	13.0	0.0 -	9.2	0.0 -	1.2	0.0 -	7.2	0.0 -	0.0 -	0.0 -	0.7	0.0 -	26	
	+ Maximum	27	0.5	2.7	2.2	2.2	0.0 -	3.9	0.0 -	0.0 -	0.0 -	0.2	0.0 -	27	
	- Minimum	28	6.9	0.0 -	4.1	0.0 -	0.0 -	0.0 -	0.0 -	0.0 -	14.0	3.1	0.0 -	28	
		29	8.9		12.1	0.3	0.4	0.0 -	5.1	0.0 -	0.0 -	0.3	2.1	29	
		30	1.6		36.4 +	14.3	0.0 -	0.0 -	0.0 -	0.0 -	0.0 -	0.0 -	0.0 -	30	
		31	0.5		12.6	0.0 -	0.0 -	2.2	0.0 -	0.0 -	0.0 -	0.0 -	1.6	31	
Monatssumme		119.3	65.1	142.4	96.8	196.9+	92.8	66.2	58.4	129.8	109.8	103.0	11.9 -		
Maximum		25.3	19.8	36.4	29.2	39.6	24.1	16.4	11.2	34.2	27.1	73.4 +	5.9 -	mm	
Datum (Tag)		16.	21.	30.	2.	1.	18.	17.	18.	17.	13.	20.	9.		
Niederschlagstage		14	9	12	8	13	14	9	9	14	10	6	3	d	
Niederschlagstage grösser / gleich als:		157 ≥0.1		142 ≥0.3		72 ≥5.0		43 ≥10.0		11 ≥20.0		1 ≥50.0		0 ≥100.0	
Jahreswerte:		Gesamtniederschlag (1a): 1192.4 mm						Niederschlagstage (≥1.0 mm): 121							



2004-2015	2004	2005	2006	2007	2008	2009	2010	2011	2012	2013	2014	2015	
Jahressumme	1072.9	982.8	949.5 -	1311.8	1443.6	1224.3	1304.6	1129.5	1608.5+	1326.8	1440.3	1192.4	
Jahresmaximum	68.4	47.8	49.0	51.1	63.7	66.8	64.4	40.1 -	67.1	74.3	104.6 +	73.4	mm
Datum (Tag,Monat)	26.10.	21.1.	8.12.	8.8.	29.10.	17.7.	15.11.	26.8.	20.1.	19.4.	4.11.	20.11.	
Durchschnittliche Jahressumme 2004-2015 (nur vollständige Jahre):	1249 mm						Normwert 1981-2010: 1330 mm			Normwert 1961-1990: 1424 mm			





# Niederschlag: Tagessummen

Flussgebiet: Reuss

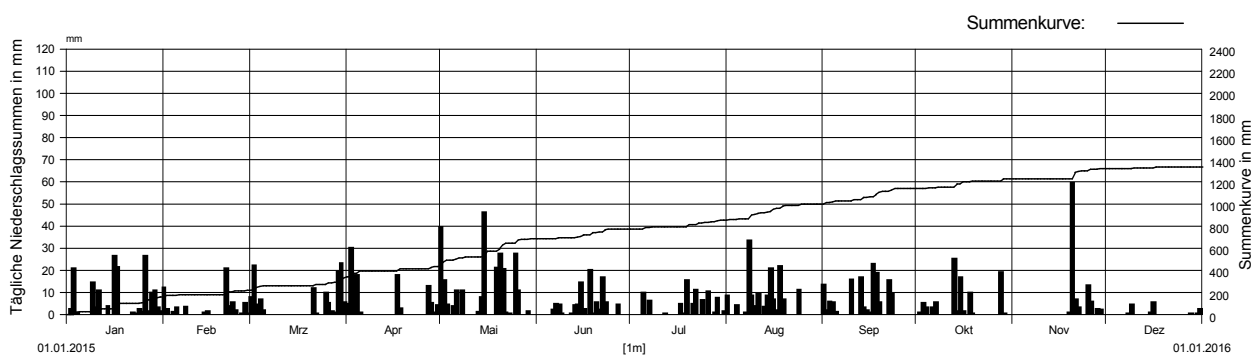
Messstelle: Bristen

Messstellen-Nr.: 4118

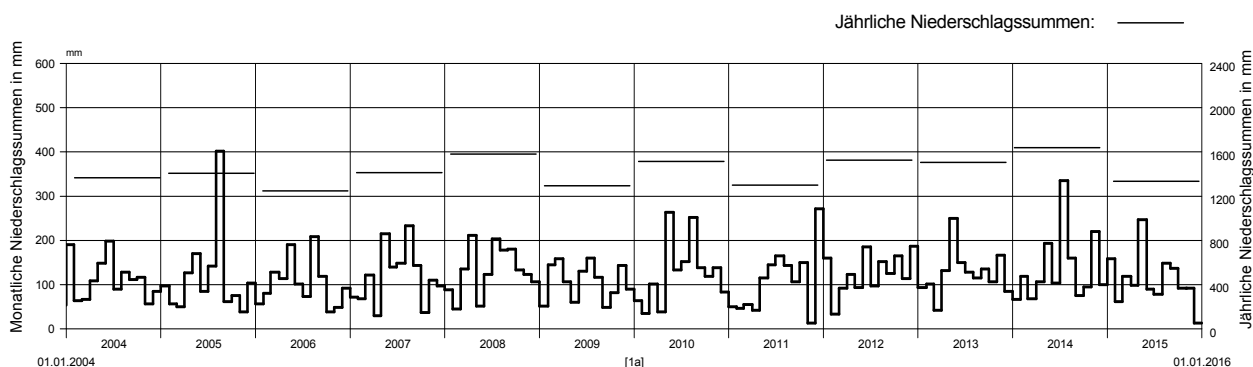
Koordinaten: 696 700 / 180 300

Stationshöhe: 828 m ü.M.

2015		Januar	Februar	März	April	Mai	Juni	Juli	August	September	Oktober	November	Dezember			
Tages- summen Niederschlag in mm	1	0.0 -	12.1	7.8	4.7	39.2	0.0 -	0.0 -	8.2	13.4	0.0 -	0.0 -	0.0 -	1		
	2	2.2	2.2	21.9	30.1 +	15.2	0.0 -	0.0 -	0.0 -	1.6	0.7	0.0 -	0.0 -	2		
	3	20.8	0.0 -	4.4	2.2	4.3	0.0 -	0.0 -	0.0 -	5.6	5.1	0.0 -	0.0 -	3		
	4	0.6	1.0	6.7	17.6	0.0 -	0.0 -	0.0 -	4.1	5.3	2.9	0.0 -	0.0 -	4		
	5	0.0 -	3.1	1.7	0.8	3.6	0.0 -	9.8	0.0 -	1.1	0.0 -	0.0 -	0.0 -	5		
	6	0.0 -	0.0 -	0.0 -	0.0 -	10.7	1.9	0.0 -	0.0 -	0.0 -	2.9	0.0 -	0.0 -	6		
	7	0.0 -	0.0 -	0.0 -	0.0 -	0.0 -	4.8	6.0	0.7	0.0 -	5.3	0.0 -	0.0 -	7		
	8	0.0 -	3.4	0.0 -	0.0 -	10.6	4.2	0.0 -	33.5 +	0.0 -	0.0 -	0.0 -	0.3	8		
	9	14.3	0.0 -	0.0 -	0.0 -	0.0 -	0.4	0.0 -	8.4	0.0 -	0.0 -	0.0 -	4.2	9		
	10	2.9	0.0 -	0.0 -	0.0 -	0.0 -	0.0 -	0.0 -	3.6	15.8	0.0 -	0.0 -	0.0 -	10		
	11	10.5	0.0 -	0.0 -	0.1	0.0 -	0.1	0.0 -	9.2	0.0 -	0.0 -	0.0 -	0.0 -	11		
	12	0.0 -	0.0 -	0.0 -	0.0 -	0.0 -	0.2	0.4	0.0 -	0.0 -	0.0 -	0.0 -	0.0 -	12		
	13	0.0 -	0.0 -	0.0 -	0.0 -	1.0	3.9	0.0 -	3.4	16.5	25.0 +	0.0 -	0.0 -	13		
	14	3.7	0.5	0.0 -	0.0 -	7.7	4.4	0.0 -	8.3	3.1	1.4	0.0 -	0.0 -	14		
	15	0.0 -	1.5	0.0 -	0.0 -	45.9 +	14.4	0.0 -	20.5	1.8	16.8	0.0 -	0.8	15		
	16	26.2 +	0.0 -	0.0 -	0.0 -	0.0 -	2.4	0.0 -	6.7	0.6	1.4	0.0 -	5.5 +	16		
	17	21.2	0.0 -	0.0 -	17.7	0.0 -	0.0 -	4.5	1.6	22.7 +	0.0 -	0.0 -	0.0 -	17		
	18	0.0 -	0.0 -	0.0 -	2.7	0.0 -	19.9 +	0.3	21.8	18.8	9.6	0.0 -	0.0 -	18		
	19	0.0 -	0.0 -	0.0 -	0.0 -	21.0	0.2	15.4 +	6.8	5.4	0.4	0.6	0.0 -	19		
	20	0.0 -	0.0 -	0.0 -	0.0 -	27.2	5.4	0.0 -	0.0 -	0.0 -	0.0 -	59.4 +	0.0 -	20		
	21	0.0 -	20.6 +	11.7	0.0 -	20.3	1.9	4.5	0.0 -	0.0 -	0.0 -	6.6	0.0 -	21		
	22	0.5	3.8	0.2	0.0 -	0.7	16.7	10.9	0.0 -	15.5	0.0 -	2.9	0.0 -	22		
	23	0.4	5.4	0.0 -	0.0 -	0.3	5.5	0.0 -	0.0 -	9.5	0.0 -	0.0 -	0.0 -	23		
	24	2.4	1.6	0.0 -	0.0 -	0.1	0.0 -	6.2	10.9	0.0 -	0.0 -	0.0 -	0.0 -	24		
	25	1.1	0.0 -	9.7	0.1	27.2	0.0 -	0.0 -	0.0 -	0.0 -	0.0 -	12.9	0.0 -	25		
	26	26.2 +	0.2	5.1	0.0 -	10.6	0.0 -	10.2	0.0 -	0.0 -	0.0 -	5.6	0.0 -	26		
	+ Maximum	27	1.5	5.1	1.3	12.7	0.0 -	4.4	0.0 -	0.0 -	0.0 -	0.0 -	0.0 -	27		
	- Minimum	28	9.8	0.4	0.5	5.1	0.0 -	0.0 -	0.7	0.0 -	0.0 -	19.0	2.3	0.2	28	
		29	10.7		19.2	0.8	1.5	0.0 -	7.5	0.0 -	0.0 -	0.4	2.1	0.0 -	29	
		30	2.9		23.1 +	4.0	0.0 -	0.0 -	0.0 -	0.0 -	0.0 -	0.0 -	0.2	0.0 -	30	
		31	1.2		5.2	0.0 -	0.0 -	0.0 -	1.4	0.0 -	0.0 -	0.0 -	2.3	0.0 -	31	
Monatssumme		159.1	60.9	118.5	98.6	247.1 +	90.7	77.8	147.7	136.7	90.9	92.4	13.5 -			
Maximum		26.2	20.6	23.1	30.1	45.9	19.9	15.4	33.5	22.7	25.0	59.4 +	5.5 -	mm		
Datum (Tag)		16.	21.	30.	2.	15.	18.	19.	8.	17.	13.	20.	16.			
Niederschlagstage		16	11	12	9	15	13	10	14	14	10	7	3	d		
Niederschlagstage grösser / gleich als:		166 ≥0.1		156 ≥0.3		80 ≥5.0		48 ≥10.0		20 ≥20.0		1 ≥50.0		0 ≥100.0		mm
Jahreswerte:		Gesamtniederschlag (1a): 1333.9 mm						Niederschlagstage (≥1.0 mm): 134								



2004-2015	2004	2005	2006	2007	2008	2009	2010	2011	2012	2013	2014	2015	
Jahressumme	1364.9	1407.6	1247.2 -	1415.4	1582.4	1293.3	1515.6	1303.1	1524.8	1504.8	1640.4 +	1333.9	
Jahresmaximum	69.0	140.3 +	42.5 -	54.0	58.7	64.5	67.4	54.8	56.2	75.2	87.2	59.4	mm
Datum (Tag.Monat)	5.5.	22.8.	16.9.	8.8.	15.8.	17.7.	5.8.	22.12.	3.6.	19.4.	5.11.	20.11.	
Durchschnittliche Jahressumme 2004-2015 (nur vollständige Jahre):	1428 mm			Normwert 1981-2010: 1455 mm				Normwert 1961-1990: 1400 mm					



# Niederschlag: Tagessummen

Flussgebiet: Reuss

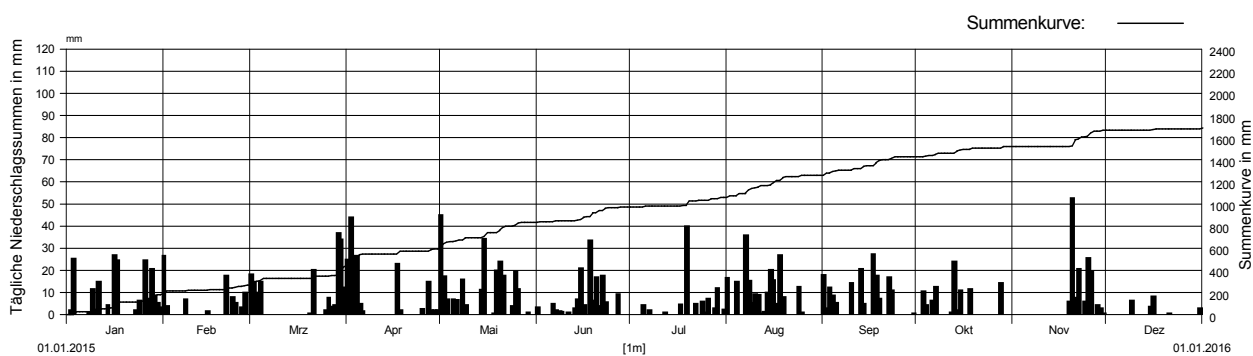
Messstelle: Unterschächen

Messstellen-Nr.: 4133

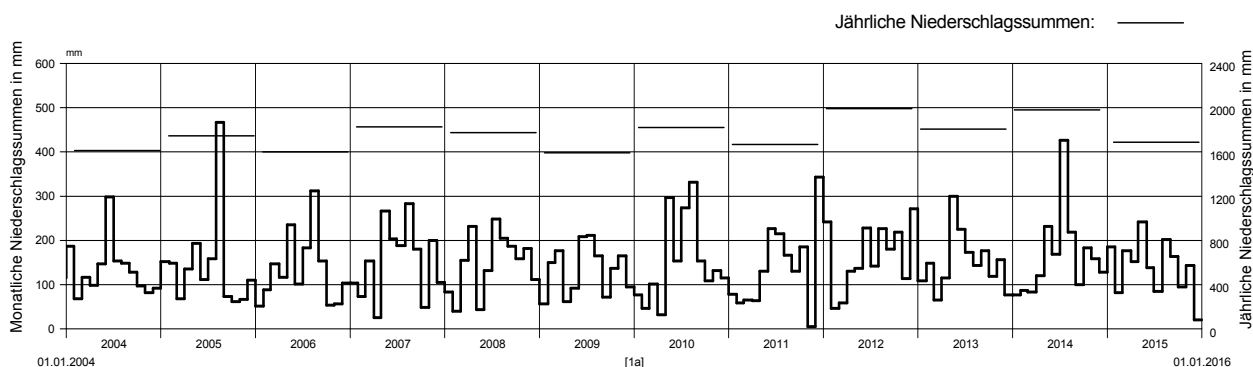
Koordinaten: 700 190 / 192 000

Stationshöhe: 1470 m ü.M.

2015		Januar	Februar	März	April	Mai	Juni	Juli	August	September	Oktober	November	Dezember		
Tages- summen Niederschlag in mm	1	0.0 -	26.4 +	17.9	24.7	44.5 +	3.1	0.0 -	16.2	17.6	0.0 -	0.0 -	0.0 -	1	
	2	1.8	3.6	14.5	43.6 +	17.1	0.0 -	0.0 -	0.0 -	2.7	0.0 -	0.0 -	0.0 -	2	
	3	24.9	0.0 -	9.8	4.6	6.8	0.0 -	0.0 -	0.0 -	12.1	10.3	0.0 -	0.0 -	3	
	4	0.0 -	0.0 -	14.5	26.2	0.0 -	0.0 -	0.0 -	0.0 -	14.7	8.3	4.1	0.0 -	0.0 -	4
	5	0.0 -	0.0 -	0.0 -	4.6	6.8	0.0 -	4.1	0.0 -	4.9	0.0 -	0.0 -	0.0 -	0.0 -	5
	6	0.0 -	0.0 -	0.0 -	1.3	6.2	4.8	0.0 -	0.0 -	0.1	6.1	0.0 -	0.0 -	0.0 -	6
	7	0.0 -	0.0 -	0.0 -	0.0 -	0.0 -	1.7	1.6	35.7 +	0.0 -	12.2	0.0 -	0.0 -	0.0 -	7
	8	0.8	6.8	0.0 -	0.0 -	15.7	1.4	0.0 -	15.1	0.0 -	0.0 -	0.0 -	0.0 -	0.0 -	8
	9	11.2	0.0 -	0.0 -	0.0 -	3.9	0.9	0.0 -	4.9	0.0 -	0.0 -	0.0 -	0.0 -	6.1	9
	10	1.9	0.0 -	0.0 -	0.0 -	0.0 -	0.0 -	0.0 -	8.9	14.1	0.0 -	0.0 -	0.0 -	0.0 -	10
	11	14.6	0.0 -	0.0 -	0.0 -	0.0 -	0.7	0.0 -	8.6	0.0 -	0.0 -	0.0 -	0.0 -	0.0 -	11
	12	0.0 -	0.0 -	0.0 -	0.0 -	0.0 -	0.0 -	0.0 -	0.6	0.3	0.0 -	0.7	0.0 -	0.0 -	12
	13	0.0 -	0.0 -	0.0 -	0.0 -	0.0 -	0.0 -	2.8	0.0 -	1.0	20.3	23.6 +	0.0 -	0.0 -	13
	14	4.1	0.0 -	0.0 -	0.0 -	10.9	6.6	0.0 -	9.7	4.8	1.6	0.0 -	0.0 -	0.0 -	14
	15	0.0 -	1.4	0.0 -	0.0 -	33.9	20.8	0.0 -	20.1	0.0 -	10.8	0.0 -	0.0 -	3.3	15
	16	26.7 +	0.0 -	0.0 -	0.0 -	0.0 -	4.1	0.0 -	15.2	0.0 -	0.0 -	0.0 -	0.0 -	8.1 +	16
	17	24.3	0.0 -	0.0 -	22.6	0.0 -	0.0 -	4.4	4.5	26.9 +	0.0 -	0.0 -	0.0 -	0.0 -	17
	18	0.0 -	0.0 -	0.0 -	1.8	0.4	33.4 +	0.0 -	26.6	17.5	11.4	0.0 -	0.0 -	0.0 -	18
	19	0.0 -	0.0 -	0.0 -	0.0 -	19.8	6.0	39.7 +	7.8	6.9	0.0 -	5.6	0.0 -	0.0 -	19
	20	0.0 -	0.0 -	0.2	0.0 -	23.6	16.8	0.0 -	0.0 -	0.1	0.0 -	52.4 +	0.0 -	0.0 -	20
	21	0.0 -	17.4	20.1	0.0 -	17.4	3.6	0.0 -	0.0 -	0.0 -	0.0 -	7.4	0.3	0.3	21
	22	0.0 -	0.0 -	0.0 -	0.0 -	0.0 -	17.3	4.7	0.0 -	16.7	0.0 -	20.3	0.0 -	0.0 -	22
	23	1.7	7.8	0.0 -	0.0 -	0.0 -	5.5	0.0 -	0.0 -	10.5	0.0 -	0.0 -	0.0 -	0.0 -	23
	24	6.0	5.1	0.0 -	0.0 -	3.6	0.0 -	5.7	12.4	0.0 -	0.0 -	5.6	0.0 -	0.0 -	24
	25	0.0 -	0.0 -	1.7	2.4	19.2	0.0 -	0.6	0.6	0.0 -	0.0 -	25.4	0.0 -	0.0 -	25
	26	24.3	3.0	7.4	0.0 -	11.5	0.0 -	7.1	0.0 -	0.0 -	0.0 -	19.3	0.0 -	0.0 -	26
	27	6.9	9.8	3.5	14.6	0.0 -	9.0	0.0 -	0.0 -	0.0 -	0.0 -	0.0 -	0.0 -	0.0 -	27
	28	20.2	0.0 -	3.9	1.6	0.0 -	0.0 -	2.6	0.0 -	0.0 -	14.0	4.1	0.0 -	0.0 -	28
	29	8.4		36.7 +	1.8	0.7	0.0 -	11.7	0.0 -	0.0 -	0.0 -	2.6	0.0 -	0.0 -	29
	30	4.9		33.7	1.8	0.0 -	0.0 -	0.0 -	0.0 -	0.2	0.0 -	0.2	0.0 -	0.0 -	30
	31	2.9		12.1		0.0 -	0.0 -	2.1	0.0 -		0.0 -		2.5		31
Monatssumme	185.6	81.3	176.0	151.6	242.0+	138.5	84.9	202.3	163.7	94.8	142.9	20.3 -			
Maximum	26.7	26.4	36.7	43.6	44.5	33.4	39.7	35.7	26.9	23.6	52.4 +	8.1 -	mm		
Datum (Tag)	16.	1.	29.	2.	1.	18.	19.	7.	17.	13.	20.	16.			
Niederschlagstage	16	9	12	13	15	15	10	15	13	9	9	4	d		
Niederschlagstage grösser / gleich als:	156 ≥0.1		151 ≥0.3		93 ≥5.0		63 ≥10.0		28 ≥20.0		1 ≥50.0		0 ≥100.0		
Jahreswerte:	Gesamtniederschlag (1a): 1683.9 mm						Niederschlagstage (≥1.0 mm): 140								



2004-2015	2004	2005	2006	2007	2008	2009	2010	2011	2012	2013	2014	2015	
Jahressumme	1615.7	1744.0	1602.5	1829.9	1776.1	1590.4-	1819.0	1667.2	1994.2+	1806.3	1982.0	1683.9	mm
Jahresmaximum	51.9 -	183.8 +	66.3	65.9	68.4	78.3	62.9	62.5	73.6	82.1	60.6	52.4	
Datum (Tag.Monat)	5.5.	22.8.	16.9.	8.8.	21.11.	17.7.	5.8.	29.6.	9.10.	31.5.	5.11.	20.11.	
Durchschnittliche Jahressumme 2004-2015 (nur vollständige Jahre):	1759 mm			Normwert 1981-2010: 1817 mm				Normwert 1961-1990: 1773 mm					



# Niederschlag: Tagessummen

Flussgebiet: Reuss

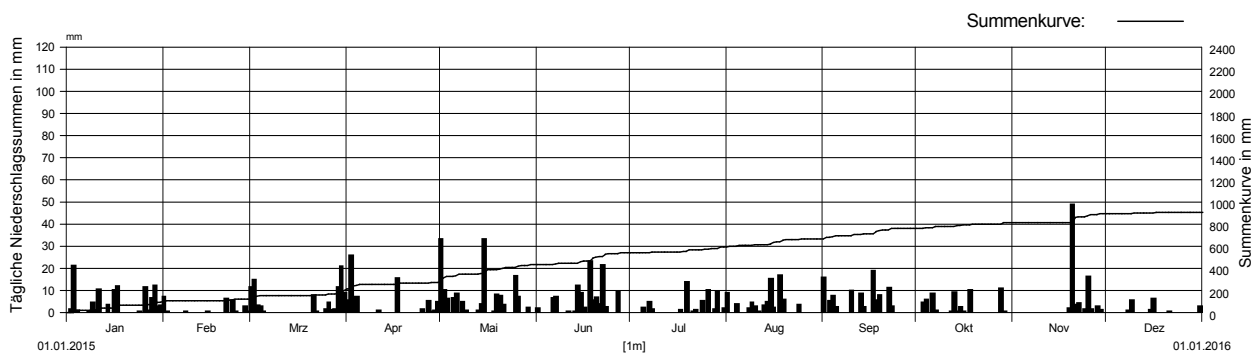
Messstelle: Altdorf

Messstellen-Nr.: 4140

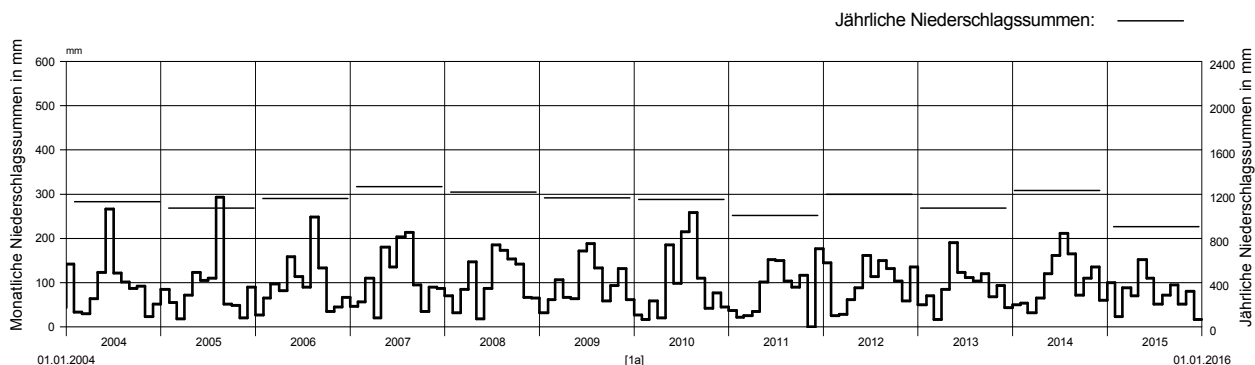
Koordinaten: 690 960 / 191 700

Stationshöhe: 451 m ü.M.

2015		Januar	Februar	März	April	Mai	Juni	Juli	August	September	Oktober	November	Dezember			
Tages- summen Niederschlag in mm	1	0.0 -	7.1 +	11.3	5.2	33.1 +	1.7	0.0 -	8.5	15.7	0.0 -	0.0 -	0.0 -	1		
	2	1.5	0.4	14.8	25.8 +	10.0	0.0 -	0.0 -	0.0 -	0.0 -	0.0 -	0.0 -	0.0 -	2		
	3	21.1 +	0.1	3.1	3.5	6.1	0.0 -	0.0 -	0.0 -	5.0	4.3	0.0 -	0.0 -	3		
	4	0.5	0.0 -	2.5	6.9	0.1	0.0 -	0.0 -	3.6	7.3	5.8	0.0 -	0.1	4		
	5	0.0 -	0.0 -	0.3	0.0 -	6.4	0.0 -	1.9	0.0 -	2.3	0.1	0.0 -	0.0 -	5		
	6	0.0 -	0.0 -	0.0 -	0.0 -	8.4	6.2	0.0 -	0.0 -	0.0 -	8.2	0.0 -	0.0 -	6		
	7	0.0 -	0.0 -	0.0 -	0.0 -	0.0 -	6.9	4.7	0.1	0.0 -	0.5	0.0 -	0.0 -	7		
	8	0.3	0.2	0.0 -	0.0 -	4.8	0.0 -	1.2	1.8	0.0 -	0.0 -	0.0 -	0.8	8		
	9	4.4	0.0 -	0.0 -	0.0 -	0.6	0.0 -	0.0 -	4.2	0.0 -	0.0 -	0.0 -	5.2	9		
	10	0.6	0.0 -	0.0 -	0.0 -	0.0 -	0.0 -	0.1	0.0 -	2.6	9.7	0.0 -	0.0 -	10		
	11	10.2	0.0 -	0.0 -	0.7	0.0 -	0.4	0.0 -	0.2	0.0 -	0.0 -	0.0 -	0.0 -	11		
	12	0.0 -	0.0 -	0.0 -	0.0 -	0.0 -	0.0 -	0.0 -	0.0 -	0.0 -	0.2	0.0 -	0.0 -	12		
	13	0.0 -	0.0 -	0.0 -	0.0 -	0.6	0.3	0.0 -	3.0	8.2	9.1	0.0 -	0.0 -	13		
	14	3.2	0.0 -	0.0 -	0.0 -	3.8	11.9	0.0 -	4.5	2.2	0.4	0.0 -	0.0 -	14		
	15	0.0 -	0.3	0.0 -	0.0 -	32.9	8.8	0.0 -	15.0	0.0 -	2.4	0.0 -	1.1	15		
	16	9.9	0.0 -	0.0 -	0.1	0.0 -	1.9	0.0 -	2.1	0.0 -	0.2	0.0 -	6.1 +	16		
	17	11.7	0.0 -	0.0 -	15.3	0.0 -	0.0 -	1.1	0.1	18.6 +	0.0 -	0.0 -	0.0 -	17		
	18	0.0 -	0.0 -	0.0 -	0.1	0.3	23.1 +	0.0 -	16.7 +	5.5	10.0	0.0 -	0.0 -	18		
	19	0.0 -	0.0 -	0.0 -	0.0 -	7.9	5.4	13.8 +	5.8	7.6	0.0 -	1.8	0.0 -	19		
	20	0.0 -	0.0 -	0.0 -	0.0 -	7.2	6.8	0.0 -	0.0 -	0.0 -	0.0 -	48.5 +	0.0 -	20		
	21	0.0 -	6.0	7.7	0.0 -	3.3	3.6	0.4	0.0 -	0.0 -	0.0 -	3.5	0.4	21		
	22	0.0 -	0.0 -	0.2	0.0 -	0.1	21.5	0.9	0.0 -	10.9	0.0 -	4.0	0.0 -	22		
	23	0.0 -	5.2	0.0 -	0.0 -	0.0 -	2.3	0.0 -	0.0 -	2.8	0.0 -	0.0 -	0.0 -	23		
	24	0.3	0.4	0.0 -	0.0 -	0.0 -	0.0 -	4.9	3.3	0.0 -	0.0 -	1.5	0.0 -	24		
	25	0.0 -	0.0 -	1.5	1.3	16.3	0.0 -	0.0 -	0.0 -	0.0 -	0.0 -	16.0	0.0 -	25		
	26	11.5	0.0 -	4.4	0.0 -	6.9	0.0 -	9.9	0.0 -	0.0 -	0.0 -	1.3	0.0 -	26		
	27	0.6	2.6	1.1	4.9	0.0 -	9.2	0.0 -	0.0 -	0.0 -	0.0 -	0.0 -	0.0 -	27		
	28	6.2	0.4	1.5	0.2	0.0 -	0.0 -	1.2	0.0 -	0.0 -	10.7 +	2.6	0.0 -	28		
	29	11.9		11.3	0.8	2.1	0.0 -	9.4	0.0 -	0.0 -	0.3	1.1	0.0 -	29		
	30	2.6		20.5 +	4.7	0.0 -	0.0 -	0.0 -	0.0 -	0.0 -	0.0 -	0.0 -	0.0 -	30		
	31	2.9		8.5		0.0 -	0.0 -	1.7	0.0 -				2.6	31		
Monatssumme		99.4	22.7	88.7	69.5	150.9+	110.1	51.1	71.5	95.8	52.2	80.3	16.3 -			
Maximum		21.1	7.1	20.5	25.8	33.1	23.1	13.8	16.7	18.6	10.7	48.5 +	6.1 -	mm		
Datum (Tag)		3.	1.	30.	2.	1.	18.	19.	18.	17.	28.	20.	16.			
Niederschlagstage		12	4	12	8	14	13	10	12	12	7	9	4	d		
Niederschlagstage grösser / gleich als:		157 ≥0.1		141 ≥0.3		64 ≥5.0		28 ≥10.0		8 ≥20.0		0 ≥50.0		0 ≥100.0		mm
Jahreswerte:		Gesamtniederschlag (1a): 908.5 mm					Niederschlagstage (≥1.0 mm): 117									



2004-2015	2004	2005	2006	2007	2008	2009	2010	2011	2012	2013	2014	2015	
Jahressumme	1133.8	1072.1	1158.2	1269.1+	1220.5	1167.5	1152.7	1009.2	1199.9	1075.3	1234.1	908.5 -	mm
Jahresmaximum	50.2	70.1	53.2	55.8	62.7	70.9 +	57.9	46.3	36.4 -	56.8	63.6	48.5	
Datum (Tag.Monat)	2.6.	22.8.	16.9.	8.8.	29.10.	17.7.	5.8.	29.6.	20.1.	31.5.	5.11.	20.11.	
Durchschnittliche Jahressumme 2004-2015 (nur vollständige Jahre): 1133 mm				Normwert 1981-2010: 1186 mm				Normwert 1961-1990: 1099 mm					



# Niederschlag: Tagessummen

Flussgebiet: Reuss

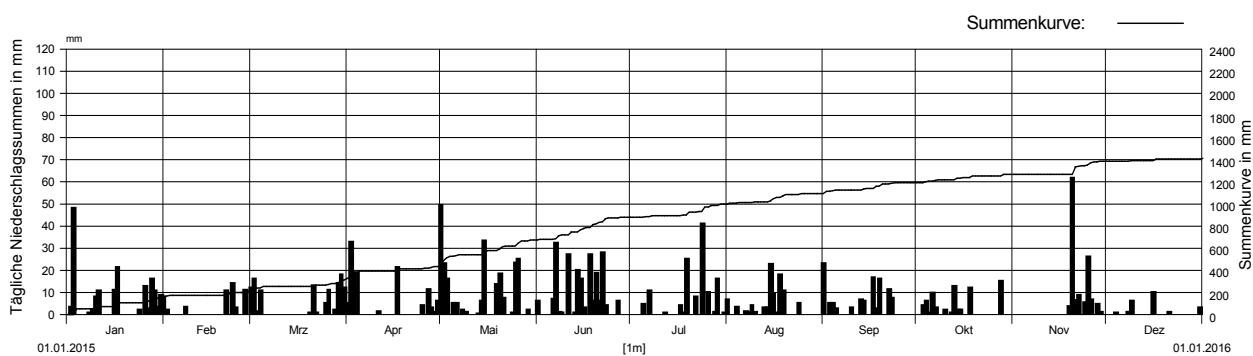
Messstelle: Isenthal

Messstellen-Nr.: 4170

Koordinaten: 685 460 / 196 110

Stationshöhe: 778 m ü.M.

2015		Januar	Februar	März	April	Mai	Juni	Juli	August	September	Oktober	November	Dezember		
Tages- summen Niederschlag in mm	1	0.0 -	8.0	12.0	5.0	49.5 +	6.0	0.0 -	6.5	23.0 +	0.0 -	0.0 -	0.0 -	1	
	2	3.2	2.0	16.0	32.5 +	23.0	0.0 -	0.0 -	0.0 -	0.0 -	0.0 -	0.0 -	0.0 -	2	
	3	48.0 +	0.0 -	1.5	6.0	16.0	0.0 -	0.0 -	0.0 -	4.9	4.0	0.0 -	0.0 -	3	
	4	0.0 -	0.0 -	10.5	19.0	0.0 -	0.0 -	0.0 -	0.0 -	3.5	5.0	6.0	0.0 -	0.5	4
	5	0.0 -	0.0 -	0.0 -	0.0 -	5.0	0.0 -	0.0 -	4.5	0.0 -	2.6	0.5	0.0 -	0.0 -	5
	6	0.0 -	0.0 -	0.0 -	0.0 -	5.0	7.0	0.0 -	0.0 -	0.0 -	9.8	0.0 -	0.0 -	0.0 -	6
	7	0.0 -	0.0 -	0.0 -	0.0 -	0.0 -	32.3 +	10.5	1.5	0.0 -	3.0	0.0 -	0.0 -	0.0 -	7
	8	0.5	3.4	0.0 -	0.0 -	1.9	1.0	0.0 -	1.0	0.0 -	0.0 -	0.0 -	0.0 -	1.0	8
	9	2.2	0.0 -	0.0 -	0.0 -	1.1	0.5	0.0 -	4.0	0.0 -	0.0 -	0.0 -	6.0	0.0 -	9
	10	8.0	0.0 -	0.0 -	0.0 -	0.0 -	0.0 -	0.0 -	1.0	3.0	1.9	0.0 -	0.0 -	0.0 -	10
	11	10.6	0.0 -	0.0 -	1.5	0.0 -	27.0	0.0 -	0.0 -	0.0 -	0.0 -	0.0 -	0.0 -	0.0 -	11
	12	0.0 -	0.0 -	0.0 -	0.0 -	0.0 -	0.0 -	0.5	0.0 -	0.0 -	0.8	0.0 -	0.0 -	0.0 -	12
	13	0.0 -	0.0 -	0.0 -	0.0 -	0.2	0.5	0.0 -	3.0	6.5	12.5	0.0 -	0.0 -	0.0 -	13
	14	0.0 -	0.0 -	0.0 -	0.0 -	6.0	20.0	0.0 -	3.0	6.0	2.0	0.0 -	0.0 -	0.0 -	14
	15	0.0 -	0.0 -	0.0 -	0.0 -	33.5	16.0	0.0 -	22.5 +	0.0 -	2.0	0.0 -	0.0 -	0.0 -	15
	16	11.0	0.0 -	0.0 -	0.0 -	0.0 -	3.0	0.0 -	9.5	0.0 -	0.0 -	0.0 -	10.0 +	0.0 -	16
	17	21.5	0.0 -	0.0 -	21.5	0.0 -	0.0 -	4.0	0.5	16.5	0.0 -	0.0 -	0.0 -	0.0 -	17
	18	0.0 -	0.0 -	0.0 -	0.0 -	0.0 -	27.0	0.5	18.0	2.5	12.0	0.0 -	0.0 -	0.0 -	18
	19	0.0 -	0.0 -	0.0 -	0.0 -	13.7	6.0	25.0	10.5	16.0	0.0 -	3.7	0.0 -	0.0 -	19
	20	0.0 -	0.0 -	0.5	0.0 -	18.3	18.5	0.0 -	0.0 -	0.0 -	0.0 -	61.8 +	0.0 -	0.0 -	20
	21	0.0 -	10.5	13.0	0.0 -	7.3	6.0	0.0 -	0.0 -	0.0 -	0.0 -	6.2	1.0	0.0 -	21
	22	0.0 -	0.0 -	0.5	0.0 -	0.0 -	28.0	8.0	0.0 -	11.5	0.0 -	8.5	0.0 -	0.0 -	22
	23	0.0 -	14.0 +	0.0 -	0.0 -	0.0 -	4.0	0.0 -	0.0 -	7.5	0.0 -	0.0 -	0.0 -	0.0 -	23
	24	2.0	3.0	0.0 -	0.0 -	0.5	0.0 -	41.0 +	5.0	0.0 -	0.0 -	5.2	0.0 -	0.0 -	24
	25	0.0 -	0.0 -	5.0	4.0	23.5	0.0 -	0.0 -	0.0 -	0.0 -	0.0 -	26.0	0.0 -	0.0 -	25
	26	12.5	0.0 -	11.0	0.0 -	25.0	0.0 -	10.0	0.0 -	0.0 -	0.0 -	6.5	0.0 -	0.0 -	26
	27	2.5	11.0	0.0 -	11.5	0.0 -	6.0	0.0 -	0.0 -	0.0 -	0.0 -	0.0 -	0.0 -	0.0 -	27
	28	16.0	0.0 -	2.0	3.0	0.0 -	0.0 -	1.0	0.0 -	0.0 -	15.0 +	4.5	0.0 -	0.0 -	28
	29	10.5		14.0	1.0	2.0	0.0 -	16.0	0.0 -	0.0 -	0.0 -	1.0	0.0 -	0.0 -	29
	30	3.5		18.0 +	6.0	0.0 -	0.0 -	0.0 -	0.0 -	0.0 -	0.0 -	0.0 -	0.0 -	0.0 -	30
	31	8.5		12.0		0.0 -		0.5	0.0 -					3.0	31
Monatssumme		160.5	51.9	116.0	111.0	231.5+	208.8	121.5	89.5	105.0	69.5	123.4	21.5 -		
Maximum		48.0	14.0	18.0	32.5	49.5	32.3	41.0	22.5	23.0	15.0	61.8 +	10.0 -	mm	
Datum (Tag)		3.	23.	30.	2.	1.	7.	24.	15.	1.	28.	20.	16.		
Niederschlagstage		14	7	11	11	15	15	9	13	12	10	9	5	d	
Niederschlagstage grösser / gleich als:		145 ≥0.1		144 ≥0.3		86 ≥5.0		55 ≥10.0		20 ≥20.0		1 ≥50.0		0 ≥100.0	
Jahreswerte:		Gesamtniederschlag (1a): 1410.1 mm						Niederschlagstage (≥1.0 mm): 131							



2004-2015	2004	2005	2006	2007	2008	2009	2010	2011	2012	2013	2014	2015	
Jahressumme	1528.3	1500.5	1530.7	1847.7+	1596.2	1572.4	1836.6	1459.3	1700.2	1520.2	1653.8	1410.1-	mm
Jahresmaximum	59.0	131.0 +	54.0	76.5	97.5	55.0	89.0	78.0	41.0 -	63.0	76.0	61.8	
Datum (Tag,Monat)	1.6.	22.8.	17.9.	7.8.	15.8.	17.7.	5.8.	29.6.	9.10.	1.6.	31.8.	20.11.	
Durchschnittliche Jahressumme 2004-2015 (nur vollständige Jahre):	1596 mm			Normwert 1981-2010: 1646 mm				Normwert 1961-1990: 1562 mm					

